

TECHNICAL RIDER



Pittsburgh, Pennsylvania
September 2019

Table of Contents

GENERAL INFORMATION.....	- 2 -
CONTACT INFORMATION	- 4 -
MAPS AND DIRECTIONS.....	- 6 -
LOCAL ACCOMMODATIONS	- 7 -
POLICIES AND PROCEDURES.....	- 8 -
PNC THEATRE	- 14 -
<i>Stage Draftings</i>	<i>Error! Bookmark not defined.</i>
<i>Stage Specifications and Inventories</i>	<i>- 22 -</i>
HIGHMARK THEATRE.....	- 27 -
<i>Stage Draftings</i>	<i>- 28 -</i>
<i>Stage Specifications and Inventories</i>	<i>- 35 -</i>
RAUH THEATRE	- 39 -
<i>Stage Draftings</i>	<i>- 40 -</i>
<i>Stage Specifications and Inventories</i>	<i>- 50 -</i>
SHARED INVENTORY	- 54 -
<i>Lighting Inventory.....</i>	<i>- 55 -</i>
<i>Audio Inventory</i>	<i>- 56 -</i>
<i>Video/Projection Inventory</i>	<i>- 62 -</i>
<i>Stage Drapery</i>	<i>- 64 -</i>
SHOP POLICIES	- 65 -
<i>Costume Policies.....</i>	<i>- 66 -</i>
RENTAL INQUIRIES.....	- 67 -
<i>Properties Rentals.....</i>	<i>- 68 -</i>

General Information

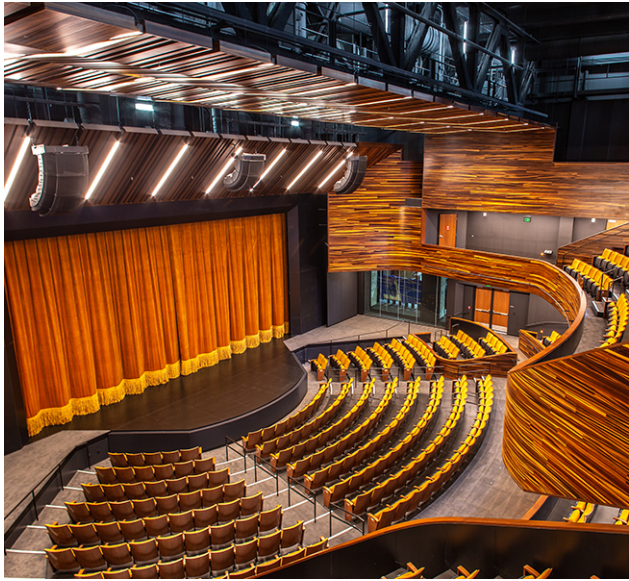
After 28 months of construction, the painstaking deconstruction and reconstruction of three historic-facades, and the unprecedented restoration of a 22 stained-glass-paneled ceiling from Pittsburgh's historic Stock Exchange Building, the gleaming new Pittsburgh Playhouse is ready for its close-up. Pittsburgh Playhouse at Point Park University officially opened its doors on October 13, the Pittsburgh Playhouse hosted a ticketed gala event that included an elegant reception, performance, dinner and dancing.



A 90,411 square-foot theater complex, the Pittsburgh Playhouse features:

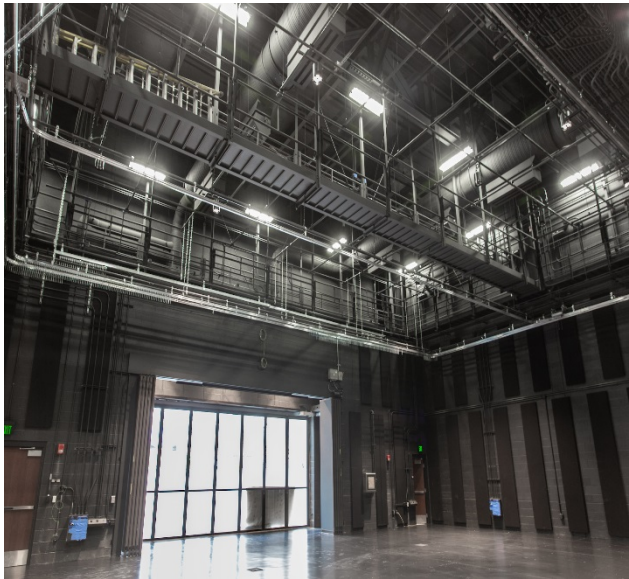
- A total of 91 rooms including a magnificent lobby space that boasts a three-story wide-open space with natural light
- A grand staircase and tucked-in spaces for students to lounge and gather
- The 550-seat PNC Theatre whose backstage and inner workings are visible from the street, resulting in an intentional glimpse into performing arts classes
- The main floor which includes an enormous paint shop, a 2,738-square-foot soundstage three stories high, a 15-foot-high catwalk and 24-foot-high ceilings to provide professional-level learning opportunities to students in multiple disciplines, including cinematography, audio work, lighting work and aesthetics.

General Information



PNC Theatre

The PNC Theatre can seat up to 550 patrons. The house is asymmetrical – it has more seats on one side and an overhanging balcony on the other. Interior and exterior, large, open windows will allow students, faculty, staff and the public to have an intimate look at the inner workings of the Playhouse. Uniquely designed for the Playhouse, the Serapid Lift holds up to 30,000 lbs. in weight and has three positions including orchestra pit, house floor providing additional seating, and stage height which transforms the stage from proscenium to thrust.



Highmark Theatre

The Highmark Theatre is a transformational black box theatre that can seat up to 200 patrons. The space can be configured as a proscenium, thrust, or arena style seating. A one of a kind, glass back wall opens to an outside, mini-amphitheater allowing for unique event opportunities, such as outdoor seating for concerts, or indoor seating for an open-air performance.

Image
Unavailable
At This Time

Rauh Theatre

The Rauh Theatre is a traditional style Black Box Theatre. This space can be configured as a proscenium, thrust, or arena style seating. Based on seating configurations, between 92 and 99 patrons can be seated per performance. The most intimate space in the theatre will allow for unique performances engaging audiences in a close, relaxed and personal way.

Contact Information

Point Park University 201 Wood St, Pittsburgh, PA 15222
Pittsburgh Playhouse 350 Forbes Ave, Pittsburgh, PA 15222

<http://pittsburghplayhouse.com/>

Office Hours
8:30 a.m.- 9:30 p.m.

Box Office Hours
10:00 a.m. – 4:00 a.m.

Administrative Staff

Steven Breese	Artistic Director	412-392-8101
Kim Martin	Producing Director	412-392-8105
Drew Martorella	Asst. VP & Managing Director	412-392-8178
Barbara Houston	Company Manager	412-392-8107
Brandon Dujmic	Box Office Manager	412-392-8115
Tiffany Primrose	Box Office Assistant	412-392-8116
Katie Colwell	Event Technical Coordinator	412-392-8126
Chris Hays	Marketing Consultant	412-392-8106

Production Staff

Alicia DiGiorgi	Director of Production and Stage Management	412-392-8103
Jonathan Surmacz	Dance Production Manager	412-392-3453
James Dworek	Technical Director	412-392-8139
Nicholas R. Smith	Scene Shop Foreman	412-392-8108
Michael Krenek	Carpenter	412-392-8108
Drew Palajsa	Carpenter	412-392-8108
Kristian Perry	Charge Scenic Artist	412-392-8140
Deborah Thomas	Scenic Artist	412-392-8140
Joan Markert	Wardrobe/Inventory Supervisor	412-392-8129
Michael Montgomery	Costume Studio Supervisor/Designer	412-392-8129
Cathleen Crocker-Perry	Master Cutter/Draper	412-392-8129
Patrick Geraci	First Hand/Stitcher	412-392-8129
John Forton	Properties Master	412-392-8130
Katie Mikula-Wineman	Assistant Prop Master	412-392-8131
Steve Shapiro	Sound Designer/Engineer	412-392-8138
Buzz Miller	Theatrical AV/IT	412-392-8104
Jeff Sherman	Master Electrician	412-392-8109
Zach Brown	Light & Sound Technician	412-392-8109
Regina T. Schober	GRW Technical Coordinator	412-392-8109

General Information

Emergency Numbers

Pittsburgh City Police

412-323-7800

Pittsburgh Fire Department

412-225-2860

Point Park University Campus Police

412-392-3960

Maps and Directions

Directions to Playhouse:

From the East:

Take I-376 W/US-22 W to Exit 71A Grant Street. Continue straight on Grant Street and make a left onto Forbes Avenue.

From the West (Airport):

Take I-376 E to Exit 71A Grant Street. Continue straight on Grant Street and make a left onto Forbes Avenue.

From the North:

Take US-19 Truck/McKnight Road. Merge onto I-279 S and take the 7th Avenue/6th Avenue Exit from I-579 S/Veterans Bridge. Keep left and follow signs for PPG Paints Arena 6th Avenue and merge onto Bigelow Blvd. Turn right onto Sixth Avenue, followed by a left onto Grant Street and then right onto Forbes Avenue.

From the South:

Take PA-51 N. Use right lane to take US-19 S Truck ramp to Downtown/Side/Dormont/I-579. Use right two lanes to turn right into Liberty Tunnel. Continue through Liberty Tunnel and turn slight right onto Crosstown Blvd. Turn left onto Forbes Avenue.

Parking:

On-street metered parking is available along Forbes Avenue and adjacent streets at Pittsburgh Parking Authority hourly rates.

The nearest public parking garage is located at the Hilton Garden Inn, 250 Forbes Avenue. A flat rate of \$5.00 applies after 4:00 PM weekdays, and all day weekends.

Other garages and surface parking lots are located downtown at various rates. Please note that some may be cash only.

Local Accommodations

This list of hotels is provided to make visits to Point Park University convenient for our guests and is not an endorsement of any particular establishment. Please contact the hotel of your choice for further information and request the “Point Park University negotiated rate” when booking your rooms, in order to be considered for these discounted rates. All rates are based on hotel availability.

Courtyard by Marriot Pittsburgh Downtown

945 Penn Avenue, Pittsburgh, PA 15222

Standard Room Rate: \$150.00

Valet Parking at \$29 per day

Reservations at 412-434-5551

Drury Plaza Pittsburgh Downtown

745 Grant St, Pittsburgh PA 15219

Standard Room Rate: \$121.00

Valet Parking: \$29 per day

Reservations at 1-800-378-7946 or Drury Plaza Hotel Website Use code: 328939

Hilton Garden Inn Pittsburgh Downtown

250 Forbes Avenue, Pittsburgh, PA 15222

Standard Room Rate: \$149.00

Self-Parking at \$30 per day

Reservations at 412-281-5557

Homewood Suites by Hilton

1410 Smallman Street, Pittsburgh, PA 15222

King Studio Suite: \$149.00

Valet Parking at \$22 per day

Reservations at 412-232-0200

Omni William Penn Hotel

530 William Penn Pl, Pittsburgh, PA 15219

Standard Room Rate: \$175.00

Valet Parking at \$36 per day

Reservations at 412-553-5220

Wyndham Grand Pittsburgh Downtown

600 Commonwealth Place, Pittsburgh, PA 15222

Single/Double Room Rate: \$145.00

Valet Parking at \$35 per night

Reservations at 412-594-2266

Policies and Procedures

Policies for Patron Safety
Production Policies
Ticketing
Outside Contractors

PNC Theatre

Policies for Patron Safety

1. The Pittsburgh Playhouse is a University owned building, and therefore, smoking is **not** permitted in any part of the building.
2. Food is not permitted in the theaters. Drinks, including bottled water, purchased from Playhouse Concessions will be allowed for certain performances.
3. The Licensee shall **not** obstruct: (i) any entrances or exits from the building, (ii) any stairways, hallways, or access to utilities within the building, or (iii) any sidewalks immediately outside the building.
4. Firearms are prohibited in all University buildings. All “prop” weapons must be cleared through the Technical Director and the Point Park University police department.

Production Policies

1. Prior to the event, the Licensee shall provide a complete list of all persons to be allowed in the backstage area.
2. The house opens 30 minutes prior to the scheduled performance. All set-up and sound checks must be completed by this time.
3. It is recommended that valuables be collected by the Licensee’s Stage Manager prior to the event and kept until the event is completed. Although the Pittsburgh Playhouse maintains twenty-four (24) hour security in all areas, **the Pittsburgh Playhouse assumes no responsibility for valuables left in dressing rooms.**
4. All smoke and pyrotechnics effects must be approved by the Pittsburgh Playhouse Technical Director.

PNC Theatre

5. All scenery and props must be fireproofed by the Licensee so as to satisfy all legal standards and the highest standards or accepted practice.
6. All electrical equipment brought into the building by the Licensee shall comply with all rules and regulations of city, state, and federal governments.
7. Any use and/or change of rigging and equipment must be approved in advance by the Technical Director.
8. The facilities are a place of public accommodation and are accessible to disabled persons in compliance with the Americans with Disabilities Act (ADA). The Licensee shall not allow any persons to render the facilities inaccessible or otherwise cause the facilities to be out of compliance with the ADA.

Ticketing

Ticketing System: ProVenue (Tickets.com)

Ticketing stations: 4 (3 inside lobby, 1 for outdoor walkup sales)

Ticket Printers: Boca Lemur S

Ticket Scanners: Alvarado handheld scanners with PocketGate software (8 devices)

Access Control: Alvarado GateLink with access points at all three theatres.

On Sale Dates: On-sale and presale dates must be provided.

PNC Theatre

Promo/Discount Offers: Provide any applicable discount offer details including promo code names, promo start and end date/time, ticket limits, physical coupons for discount, etc...

Holds/Kills: Approximate number of holds for artists, promotions, giveaways, labels, promoters, production needs, etc. must be provided. The venue will hold all ADA seating and sell through box office. Sellable capacity is dependent on final hold/kill numbers, stage set up, and venue size.

Ticket Header Text: Ticket must have event name, date, time, and venue printed. Other text can be added by request. All text can be spaced and placed in any configuration on ticket. All information printed in upper case.

Ticket Stock: The Pittsburgh Playhouse uses Playhouse branded ticket stock for all events.

Venue Capacities: The Pittsburgh Playhouse has three unique performance spaces; one is reserved seating and two are general admission.

- **PNC Theatre** (Reserved)
 - Pit Configuration: 574
 - No Pit Configuration: 548
 - Can also be utilized as general admission
- **Highmark Theatre** (General Admission)
 - Flexible seating on risers allows for multiple configurations and capacities
 - Maximum capacity: 200
- **Rauh Theatre** (General Admission)
 - Flexible seating on risers allows for multiple configuration and capacities
 - Maximum capacity: 98

PNC Theatre

Artwork Sizes: We require various artwork sizes for both the Playhouse website and ticketing sales pages:

- Website home page slider: 883x397, 72dpi
- Website event page: 190x286, 72 dpi
- Ticket sales page: 650x600

Playhouse Hours

- The Playhouse main doors typically open 90 minutes prior to event time
- Doors to the theatre open 30 minutes before event time

OUTSIDE CONTRACTORS

The University offers all typical services necessary for a successful event, but if Customer finds it necessary to use outside services, any contractors, subcontractors, vendors, individuals and groups (“Third-Party Contractors”) hired by Customer or on behalf of Customer shall be subject to University’s prior approval. Customer will be fully responsible for the actions of any Third-Party Contractor. The University reserves the right to charge a fee for outside services brought into the University. Customer shall have written contracts with its Third-Party Contractors which shall specify that the Third-Party Contractor and the Customer will indemnify and hold the University harmless from any and all damages or liabilities which may arise by such Third-Party Contractor or through their use of the University premises. Moreover, all outside Third-Party Contractors shall maintain and provide proof prior to commencement of work or services at the University of all legally required worker’s compensation insurance for employees who will work on University premises and at least One Million Dollars (\$1,000,000) of general

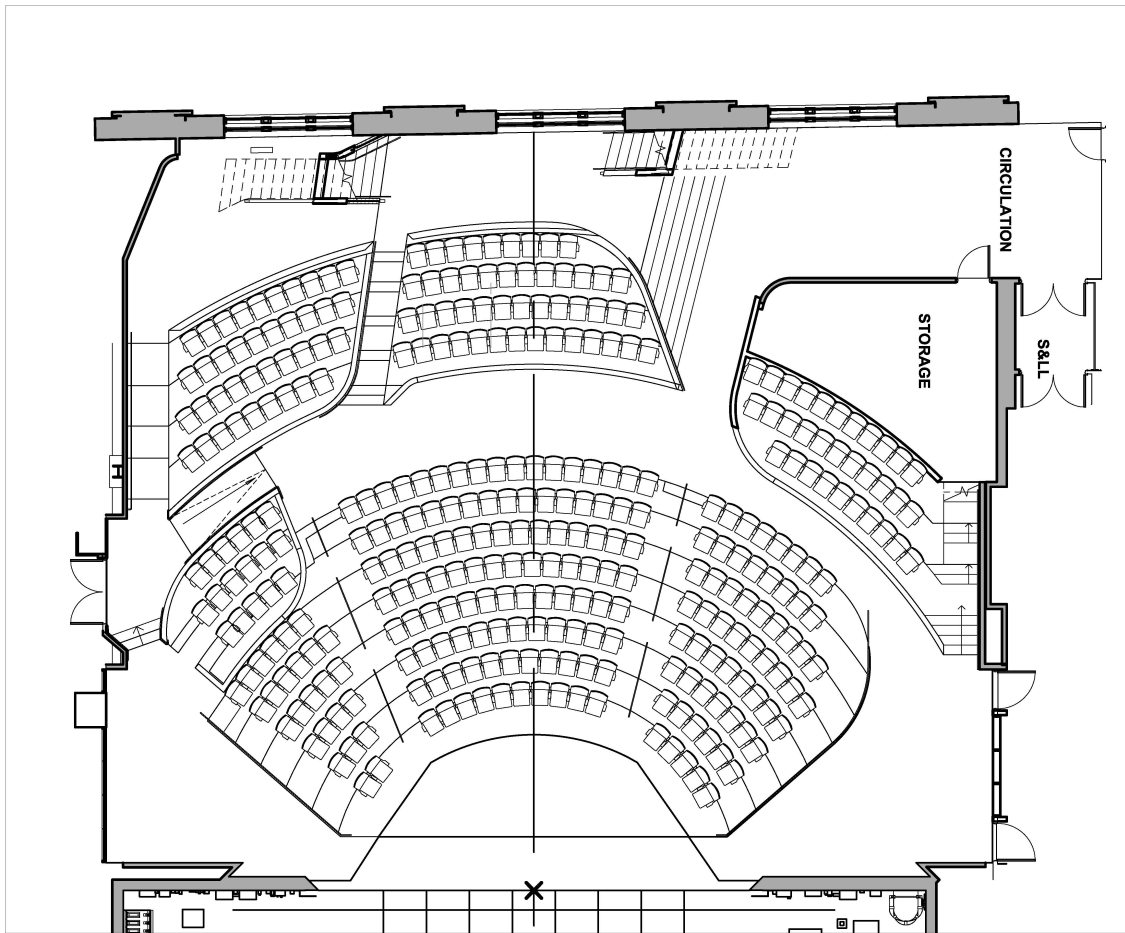
PNC Theatre

commercial liability insurance coverage naming Point Park University as an additional insured. Any connection to the ceiling or supporting structure of the University must have approval from the University prior to installation. Additionally, University maintains exclusive control over all connections to house audio, lighting, and electrical systems, and exclusive control over all signs, banners, or decorations suspended in the University.

PNC Theatre

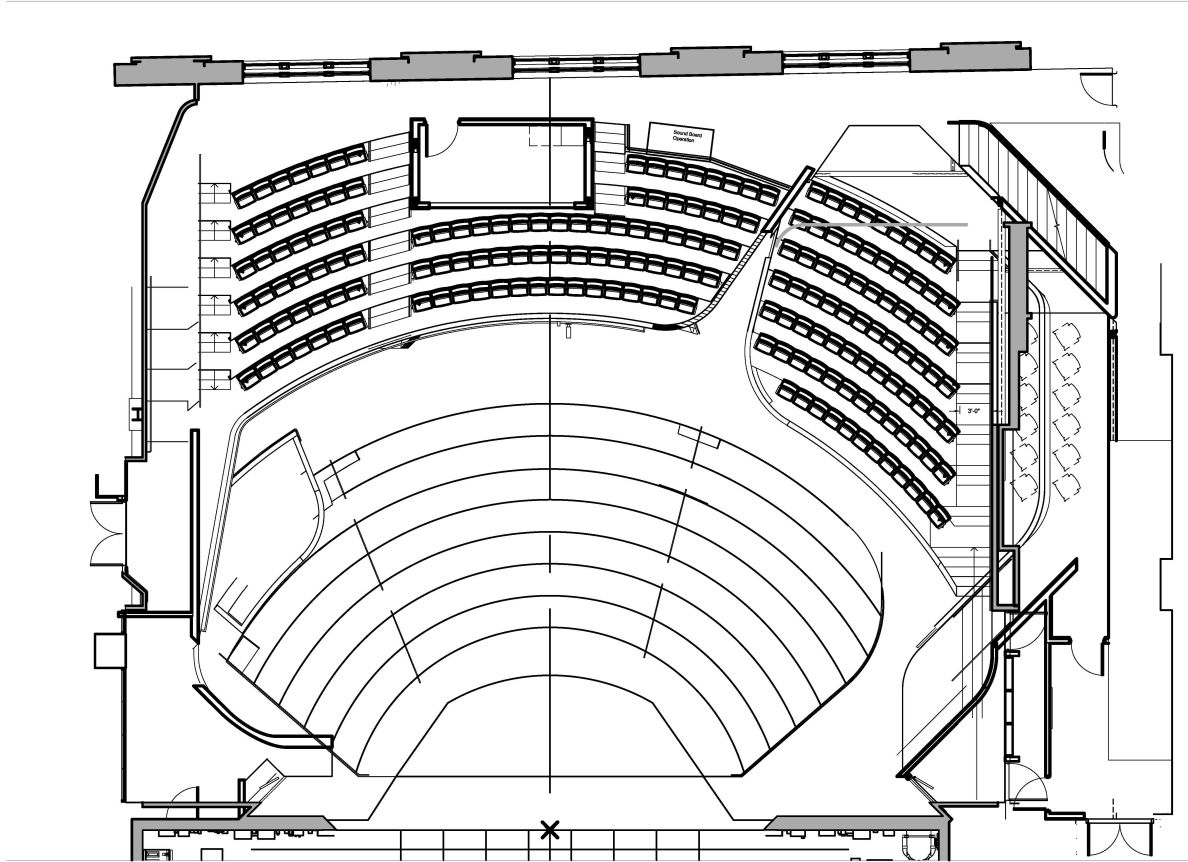


PNC Theatre



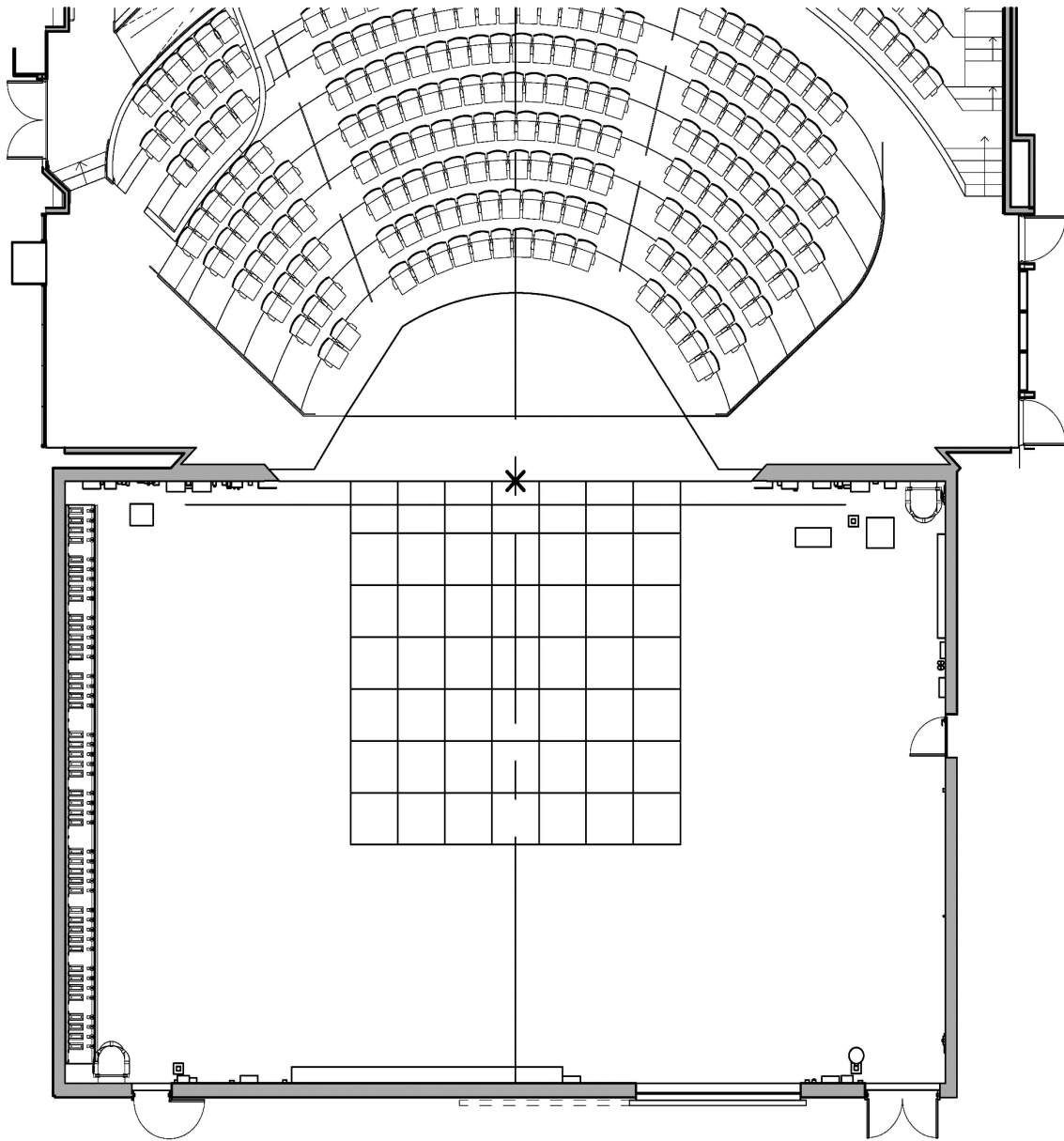
1st Floor Seating

PNC Theatre



2nd Floor Balcony Seating

PNC Theatre



Main theatre space 71' Wide X 46' Deep.
Proscenium opening 40' Wide X 22' Tall.
Orchestra lift creates 34' Wide X 14'-6" Apron.
Trap floor panels covering 28' X 28' Space

[illegible]

This architectural floor plan depicts a large hall with a curved seating area at the top and a central grid of tables. The seating area is divided into two main sections by a central aisle, with rows of seats facing each other. The central area is filled with a grid of rectangular tables, with a central aisle running through it. The right side of the plan shows a long wall with numerous small, rectangular tables or counters, each labeled with a number and a dimension. The bottom of the plan shows a long wall with a series of small, rectangular tables or counters, each labeled with a number and a dimension. The overall layout is symmetrical, with a central aisle running through the middle.

4 Motorized Fly Sets.

2 Motorized Tab Sets.

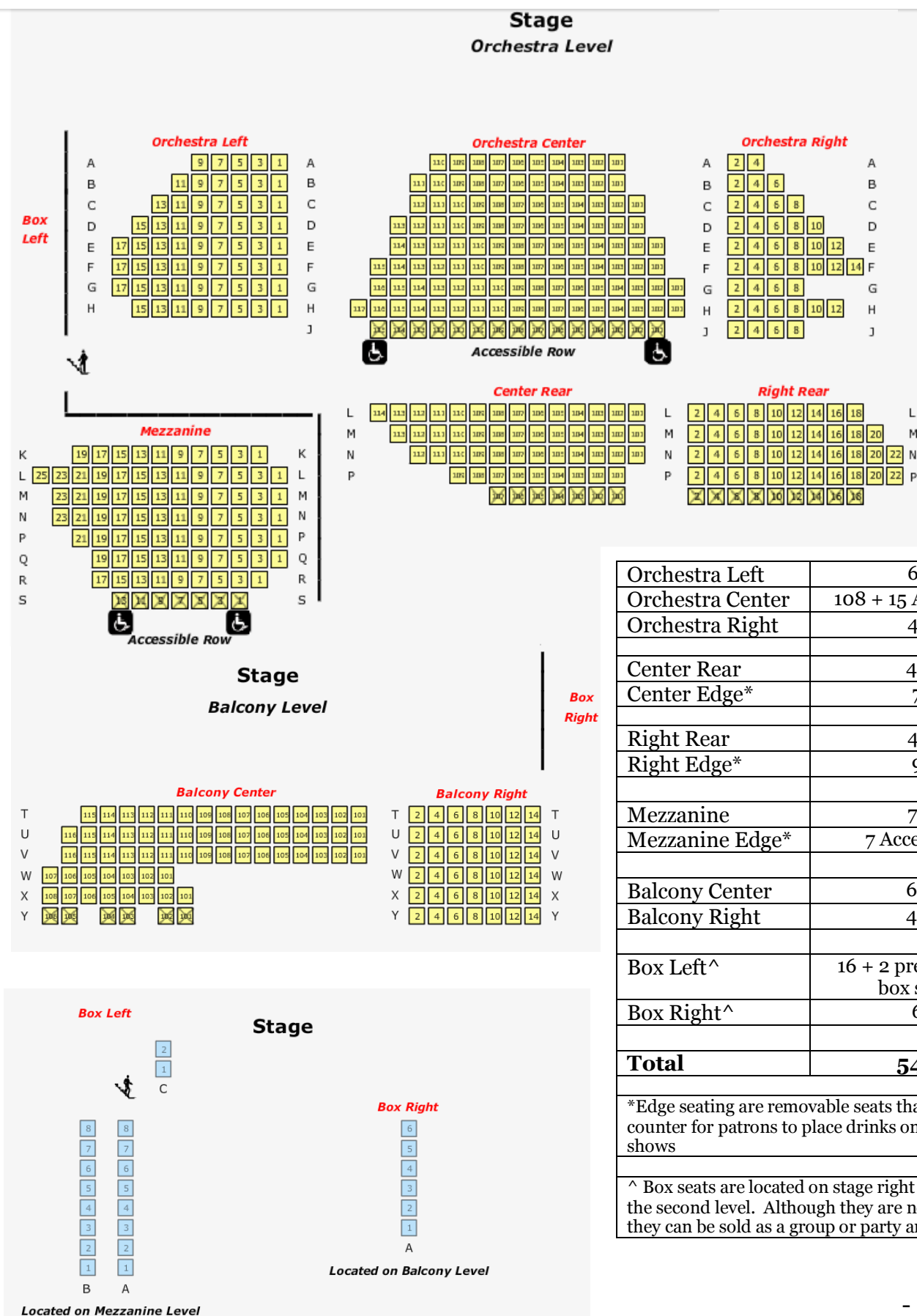
Flying Grand Drape OR Traveling Grand Drape.

3 Full Stage ADC Tracking Sets.

Automatic Motorized Fire Curtain.

13'-6 Wide X 14' Tall Motorized Load-in Door.

PNC Theatre



PNC Theatre

Stage Specifications

- The theatre can seat up to 550 patrons.
- Uniquely designed for the Playhouse, the Serapid Lift holds up to 30,000 lbs. in weight and has three positions including orchestra pit, house floor providing additional seating, and stage height which transforms the stage from proscenium to thrust.
- 36,000 pounds of counterweight provided for counterweight rigging.
- The PNC has an arbor counterweight system. The scenery and instrumentation will still be counterweighted, but the system itself is far, far easier, quicker and more user-friendly. What previously took hours will now take minutes.

Electrics

Console: ETC ION, 2 touch screens

Dimmers: 460 2.4Kw ETC sensors, 10 6Kw ETC sensors

Dimmer Distribution:

- 1st Electric: 30 ct. raceway
- Flying battens: 26 6ct. mults
- Grid: 2 6ct. mults in each wing (total 20)
- Stage Deck: 6 6ct. mults
- Catwalks: 11 6 ct. mults
- House (various locations): 7 6ct. mults
- Pit/Trap: 2 5 ct. mults

PNC Theatre

There are many doubled socapex connectors throughout the system, making it easy to overestimate the capacity of the space.

Patching:

-There is only one ETC Net3 system for the whole building. Please be very cautious in choosing which universe to patch in. Each console is configured to mask the interconnected nature of the building, but it is possible to accidentally take control of another space. Universe 1 is reserved for dimmers, Universe 2 and 3 is for house and work lights, and universe 4 through 9 can be used for DMX devices.

-Please reserve channels 500 – 515 for house light and work light channels.

Lighting Fixtures

- 24 – 10° Phoenix
- 24 – 14° Phoenix
- 72 – 19° Phoenix (Blue)
- 144 – 26° Phoenix (White)
- 36 – 36° Phoenix
- 4 – Wide Zoom Phoenix
- 8 – Narrow Zoom Phoenix
- 4 – Wide Zoom Source4
- 8 – Narrow Zoom Source4
- 20 – 6” Fresnel
- 68 – Star Par
- 20 – Altman SpectraCyc
- 2 – Robert Juliat Followspot
- 10 – 10’ boom

PNC Theatre

Audio

All systems run on a DANTE Network

1 YAMAHA CL 5 Channel Digital Mixing Console

1 Mac Mini with

- QLab
- Dante Virtual Soundcard
- Yamaha CL Manager
- Dante Controller
- Shure Wireless Workbench
- 1 iPad with Yamaha StageMix CL

2 BOSE 4 Cabinet Line Array Clusters (Left/Right Permanent Hang)

1 BOSE 3 Cabinet Line Array Cluster (Center Permanent Hang)

3 BOSE RMS215 LP80 Subwoofers (Permanent Hang)

10 BOSE RMU208 (Under Balcony Permanent Hang)

4 BOSE RMU 208 Speaker (Floating)

4 BOSE PM 8250N 8 Channel @ 250W Power Amplifier

4 BOSE PM 8500N 8 Channel @ 500W Power Amplifier

**See floating inventory for available microphones and monitor speakers*

PNC Theatre

Headset Communications

1 CLEARCOM MS-704 4 Channel Main Station
1 CLEARCOM BS-210 2 Channel Wireless Intercom Base Station
4 CLEARCOM RS-701 1 Channel Belt Packs
4 CLEARCOM BP-210 2 Channel Wireless Intercom Belt Packs
10 CLEARCOM CC-300 Intercom Headsets

Video/Projections

Projection: Panasonic PT-RW730 projector (7200 lumens, 1280x720, 1 chip DLP) with an ET-DLE350 lens (3.53-5.36:1 throw) permanently mounted in booth for projection onto a dedicated 124"x196" Da-Lite projection screen, hung from a flying batten, either upstage or downstage of the main curtain.

AV matrix switching and signal distribution: AMX Enova DGX3200 Media Switcher for routing HD video signal from throughout theater, with DX Link connectivity (Cat6 STP) in booth and on four wall plates surrounding stage, and one in orchestra pit and one in trap room.

Computer source: a rack-mounted ADK Qube i7 PC with a single channel graphics card output can serve as a video source, with either Isadora or PowerPoint as playback software.

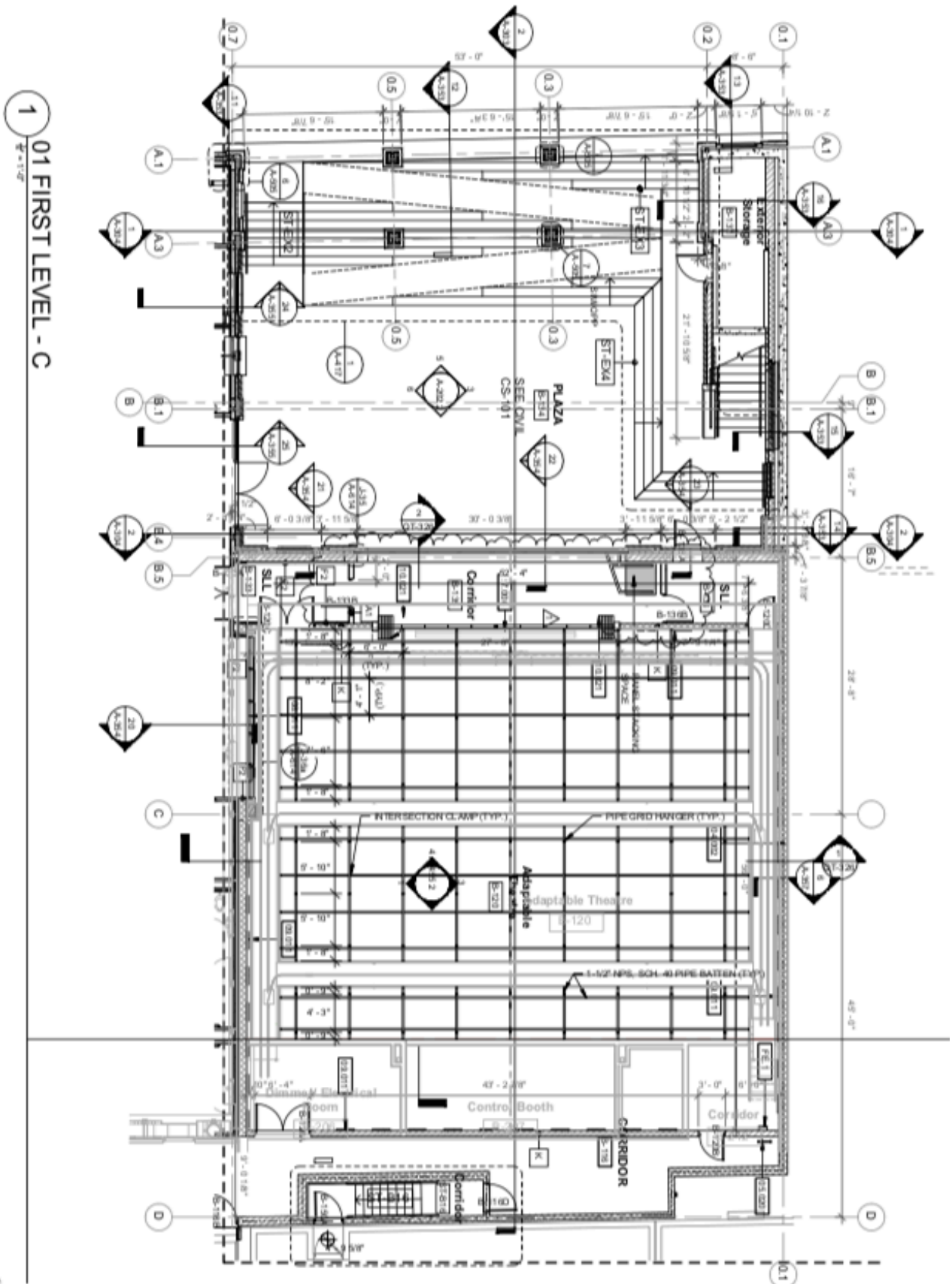
PNC Theatre

Cameras and monitors for stage managing and calling: a Panasonic AW-HE2P HD camera and an analog Honeywell HB75H IR camera to allow Stage Management to view and calling shows from video monitors, either in the booth, backstage or in the house.

Highmark Theatre

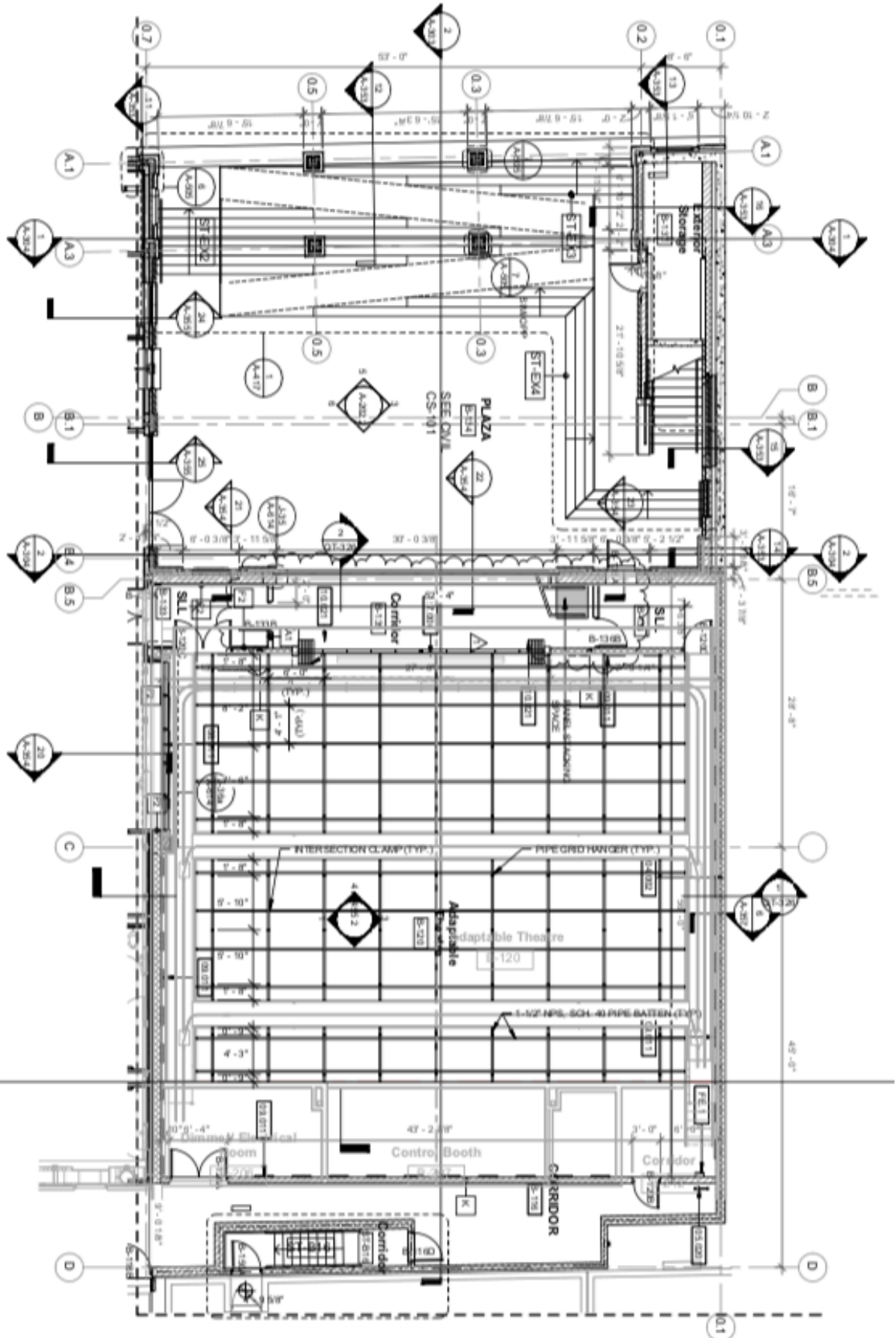


Highmark Theatre



Highmark Theatre

1
01 FIRST LEVEL - C



2

INTERIOR ELEVATION

1

INTERIOR ELEVATION

3

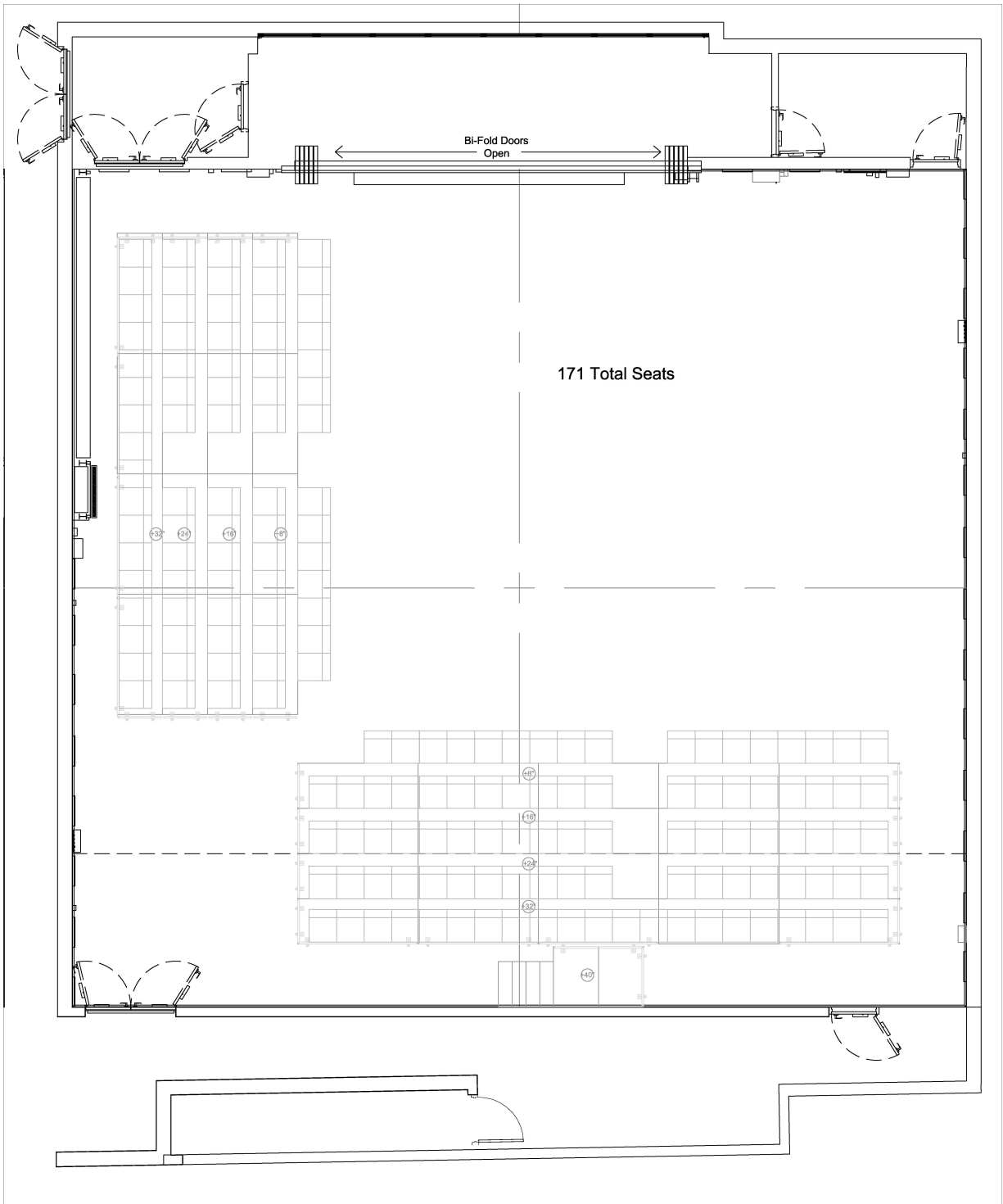
INTERIOR ELEVATION

4

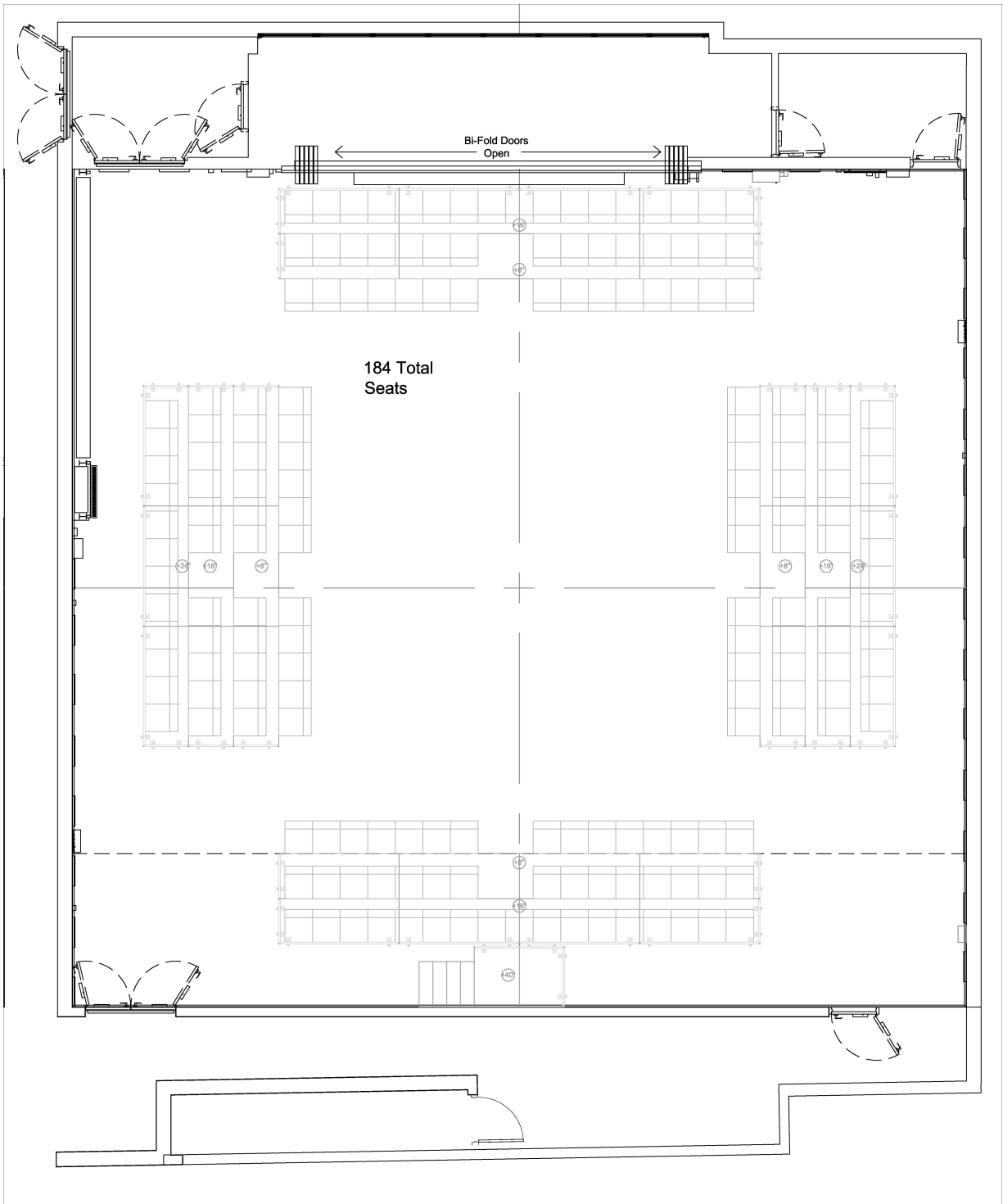
INTERIOR ELEVATION

[illegible]

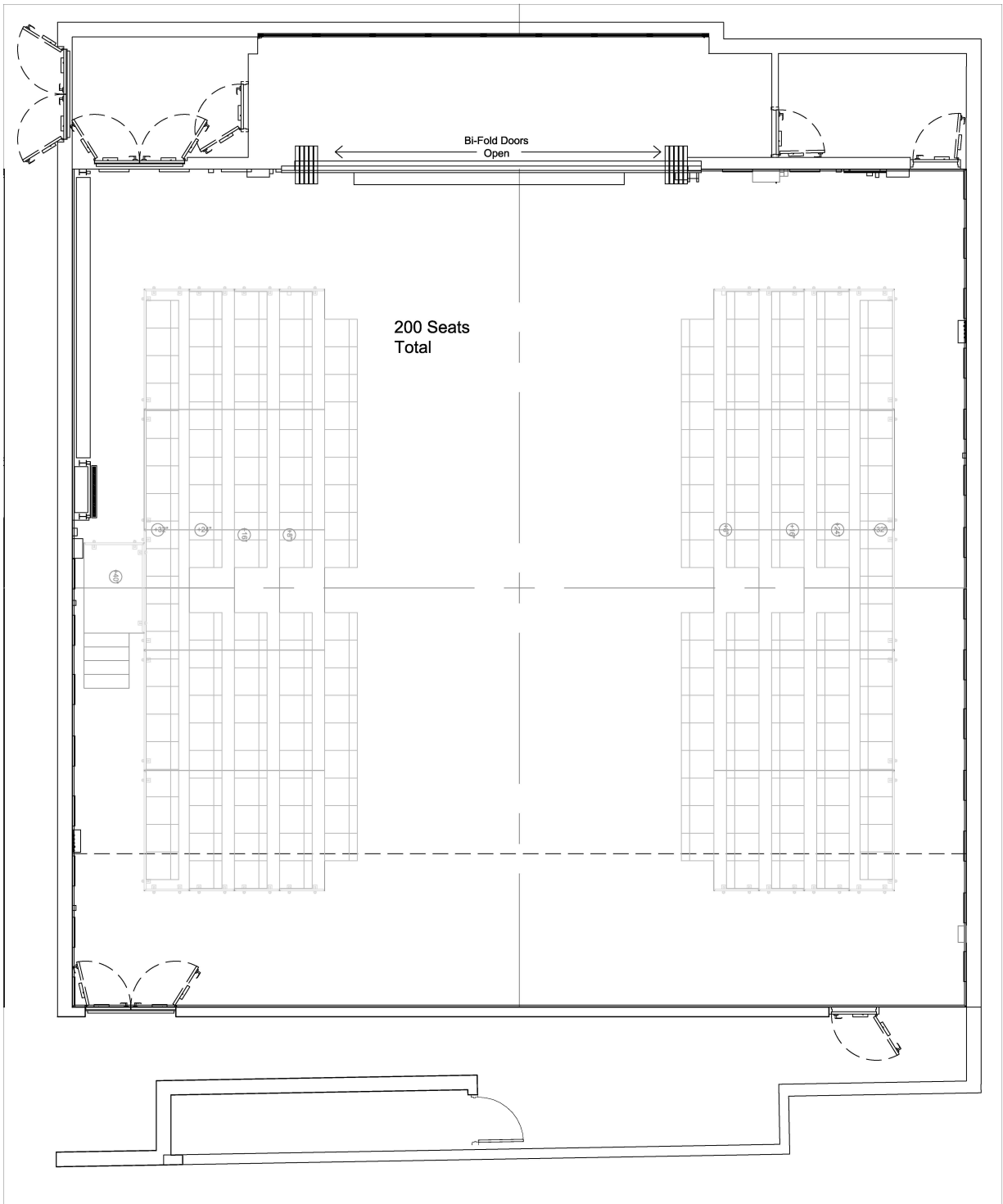
Highmark Theatre



Highmark Theatre



Highmark Theatre



Highmark Theatre

Stage Specifications

- This transformational space allows up to 200 seats.
- This area can convert from proscenium seating to thrust to arena style seating.
- The 7,500 lb. main door again allows for viewing the inside of the theatre during non-performance times.
- A one of a kind, glass back wall opens to an outside, mini-amphitheater allowing for unique event opportunities, such as outdoor seating for concerts, or indoor seating for an open-air performance.

Electrics

Console: ETC ION, 2 touch screens

Dimmers: 192 2.4Kw ETC sensors

Dimmer Distribution:

- Stage Deck: 6 6ct. mults
- West Wall Catwalk level: 15 6ct. mults
- East Wall Catwalk level: 11 6ct. mults

Patching:

-There is only one ETC Net3 system for the whole building. Please be very cautious in choosing which universe to patch in. Each console is configured to mask the interconnected nature of the building, but it is possible to accidentally take control of

Highmark Theatre

another space. Universe 1 is reserved for dimmers, Universe 2 and 3 is for house and work lights, and universe 4 through 9 can be used for DMX devices.

-Please reserve channels 500 – 515 for house light and work light channels.

Locations & Position labels

-There isn't yet a standard labeling system for the pipes in the catwalk grid.

-Please include a compass rose on your light plot. (The booth is on the South wall.)

Lighting Fixtures

- 13– 19° Source4 (Blue)
- 23 – 26° Source4 (White)
- 71 – 36° Source4
- 12 – 50° Source4 (Red)
- 28 – Source4 Par
- 24 – Source4 Parnel

Audio

All systems run on a DANTE Network

1 YAMAHA CL 1 Channel Digital Mixing Console (48 Input)

1 Mac Mini with

- QLab
- Dante Virtual Soundcard
- Yamaha CL Manager

Highmark Theatre

- Shure Wireless Workbench
- Dante Controller
- 1 iPad with Yamaha StageMix CL

4 RENKUS-HEINZ CFX 121 Loudspeakers
8 RENKUS-HEINZ CFX 151-8 Loudspeakers
4 RENKUS-HEINZ VAX101-22 Loudspeakers (Permanently
installed in 2 line arrays for presentation)
2 RENKUS-HEINZ CFX 18s Subwoofer

1 ASHLY nXp 8004 4 Channel Power Amplifier
3 ASHLY nXp 4004 4 Channel Power Amplifier
1 ASHLY nXp 8002 2 Channel Power Amplifier

**See floating inventory for available microphones and monitor speakers*

Headset Communications

1 CLEARCOM MS-702 2 Channel Main Station
1 CLEARCOM BS-210 2 Channel Wireless Intercom Base Station
4 CLEARCOM RS-701 1 Channel Belt Packs
4 CLEARCOM BP-210 2 Channel Wireless Intercom Belt Packs
8 CLEARCOM CC-300 Intercom Headsets

Highmark Theatre

Video/Projections

Projection: one Panasonic PT-RZ770 projector (7200 lumens, 1920x1200, 1 chip DLP) with an ET-DLE250 lens (2.41-3.82:1 throw) permanently mounted for projection onto a dedicated motorized 108"x192" Da-Lite projection screen.

AV matrix switching and signal distribution: an AMX Enova DGX1600 Media Switcher for routing HD video signal throughout theater, with DX Link connectivity (Cat6 STP) in booth and on four wall plates surrounding the space, and in catwalk above.

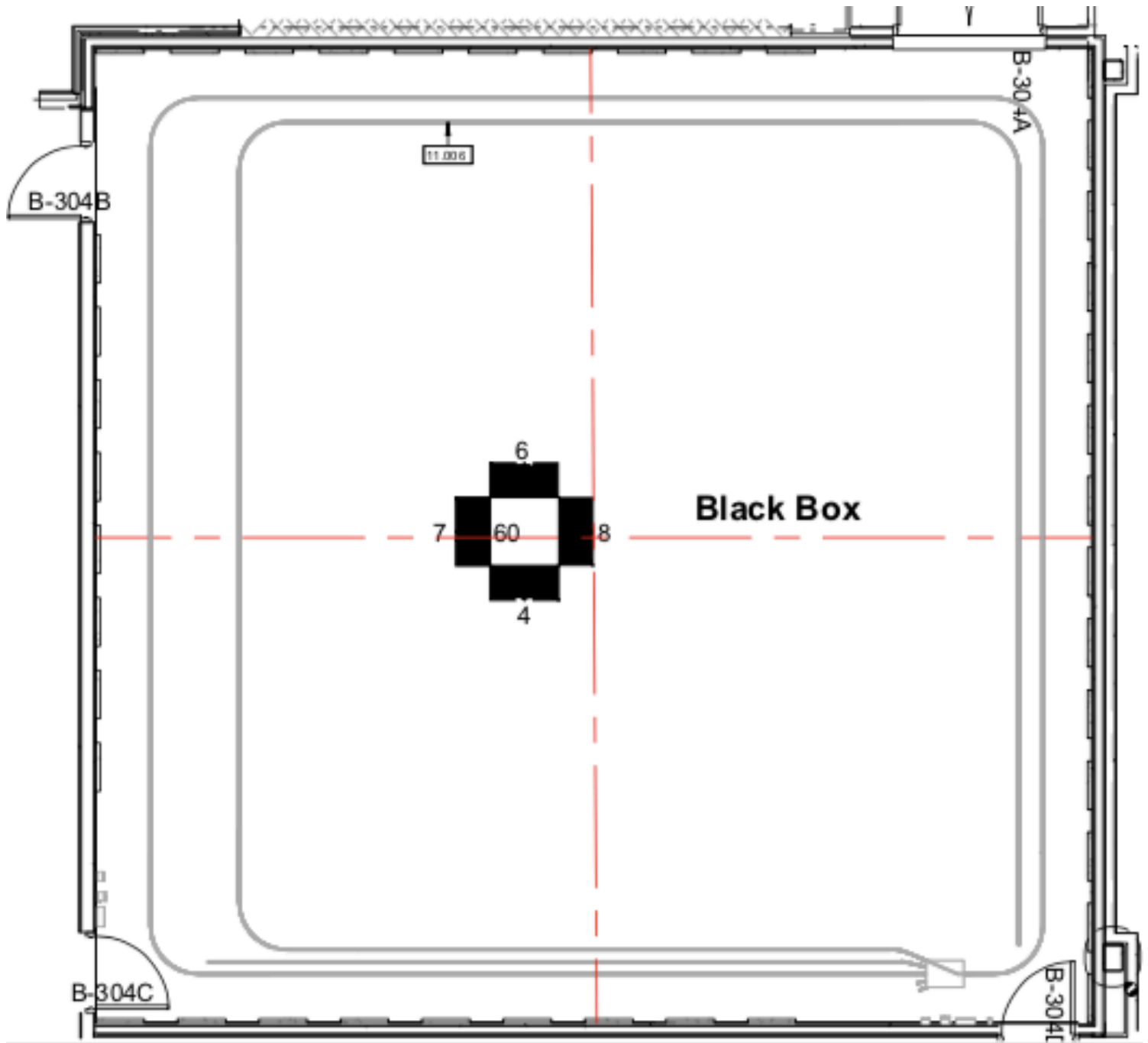
Computer source: a rack-mounted ADK Qube i7 PC with a single channel graphics card output can serve as a video source, with either Isadora or PowerPoint as playback software.

Cameras and monitors for stage managing and calling: a Panasonic AW-HE2P HD camera and an analog Honeywell HB75H IR camera to allow Stage Management to view and calling shows from video monitors, either in the booth, backstage or in the house.

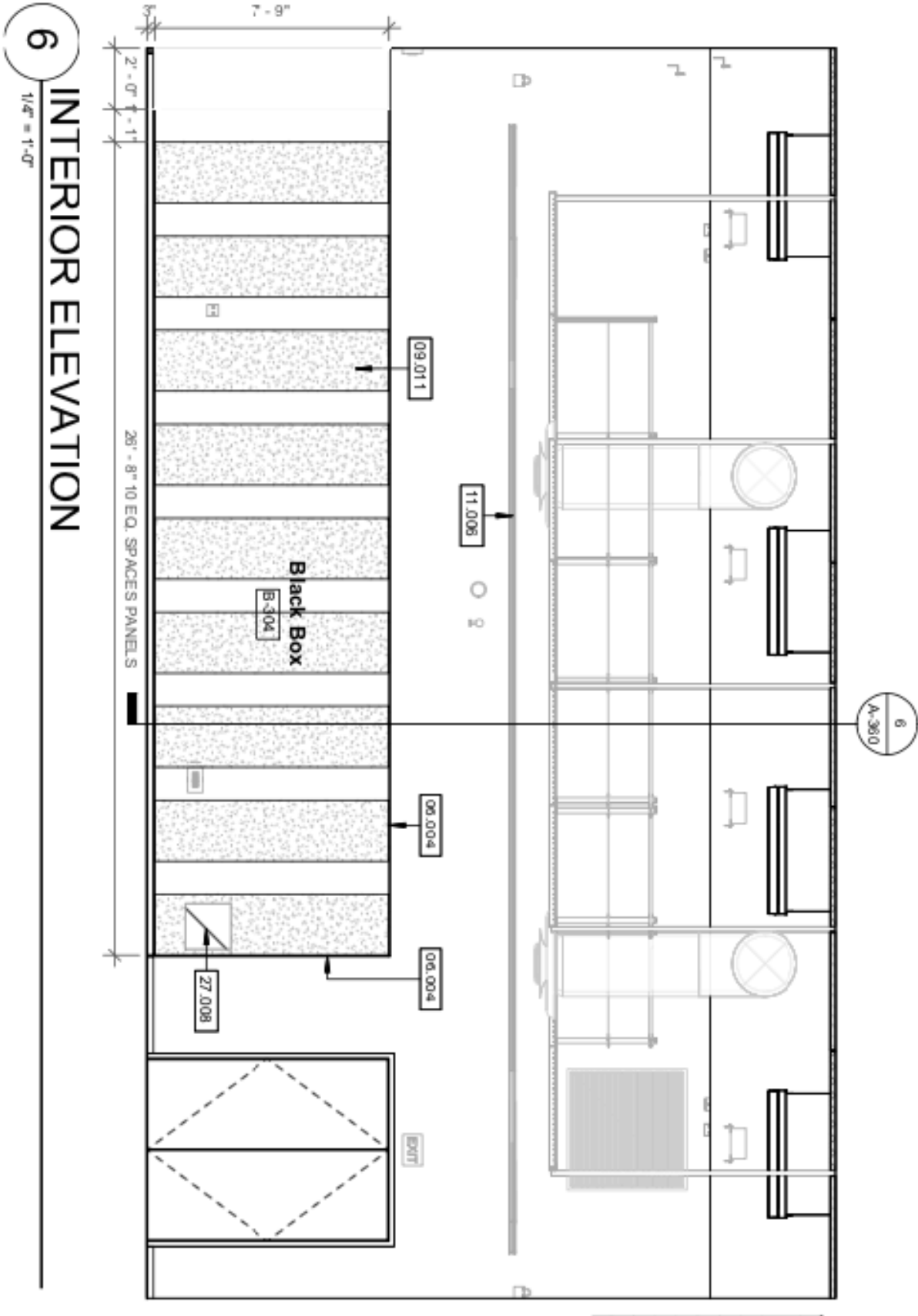
Rauh Theatre



Rauh Theatre



Rauh Theatre

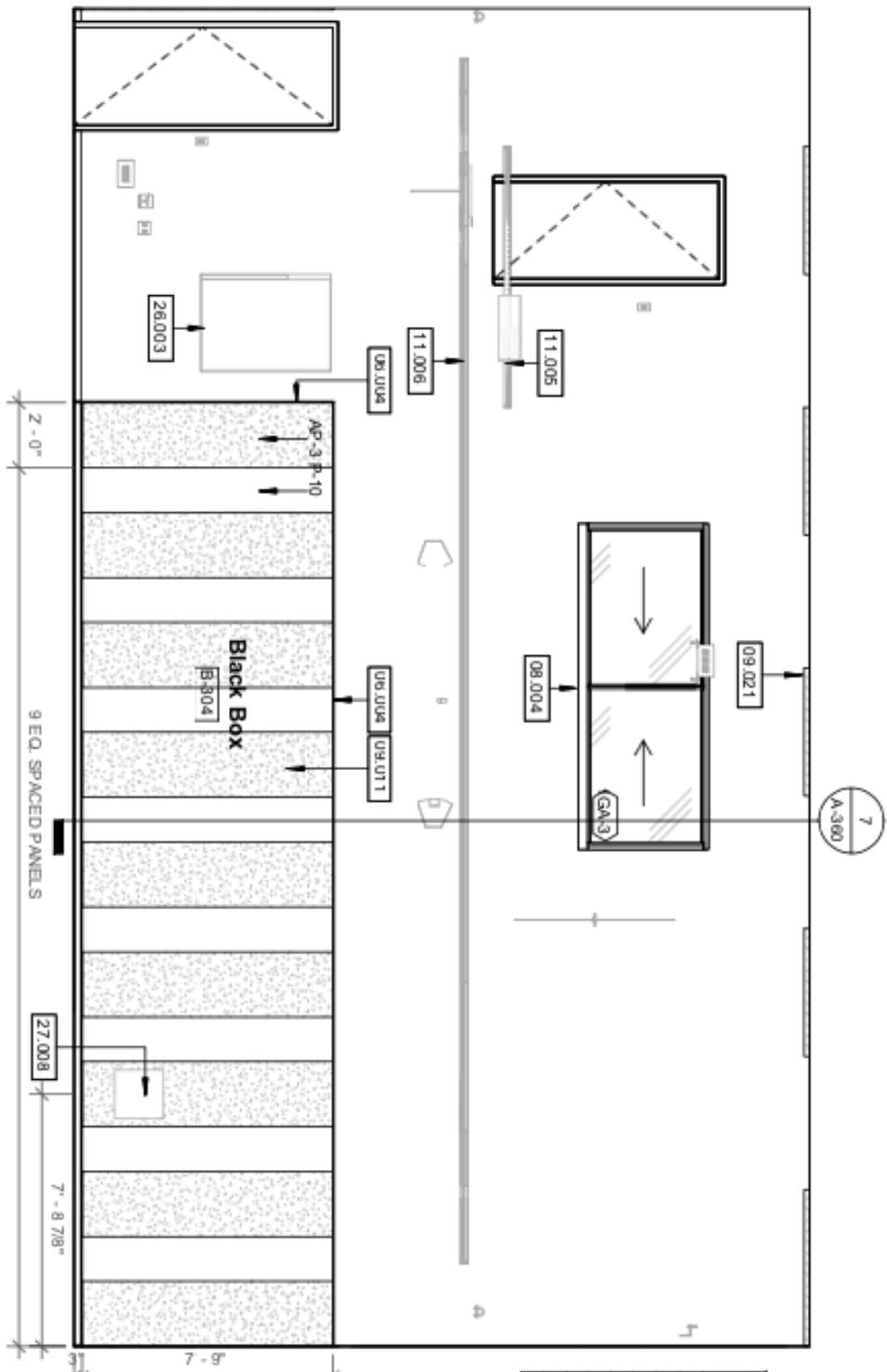


Rauh Theatre

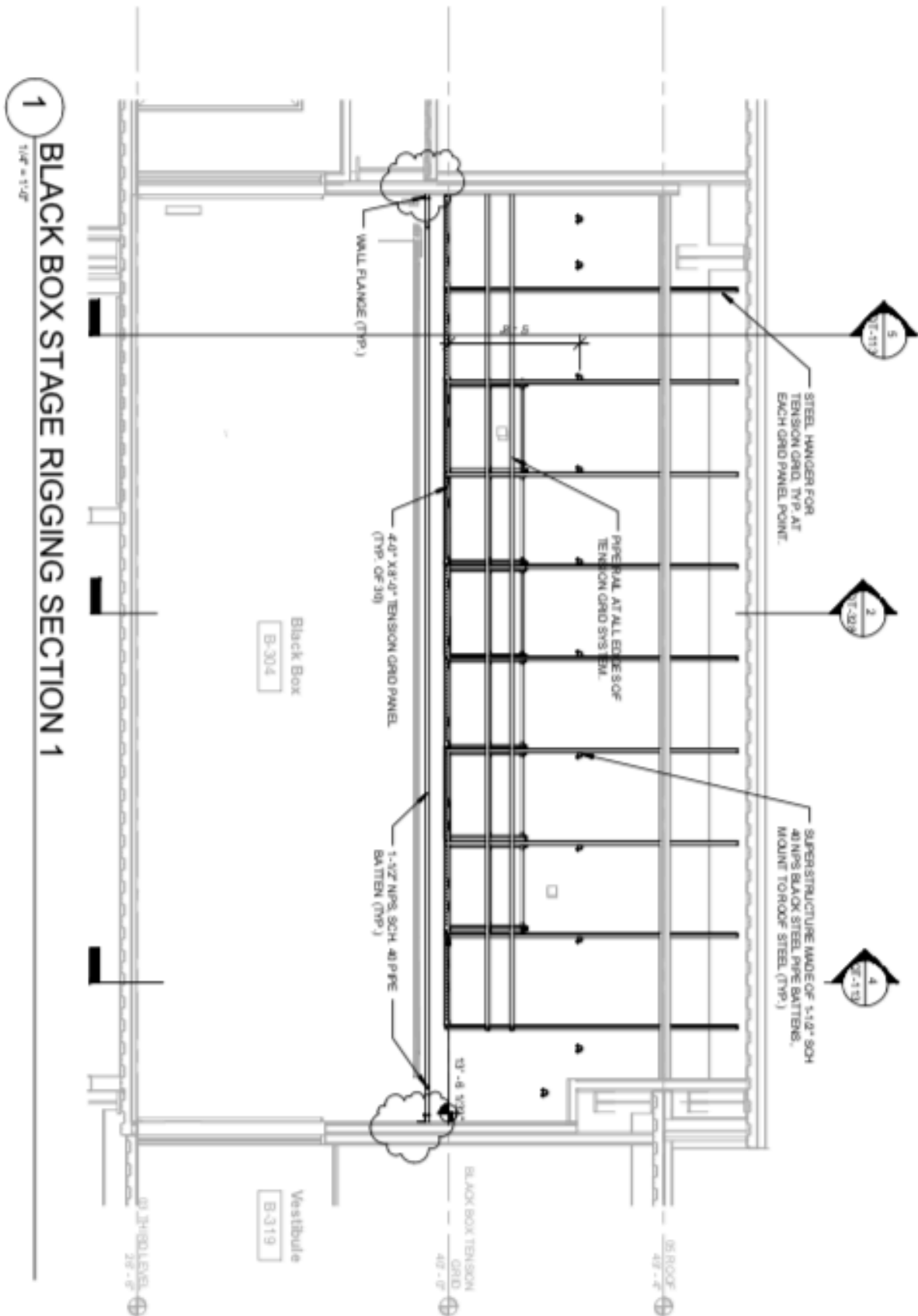
4

1/4" = 1'-0"

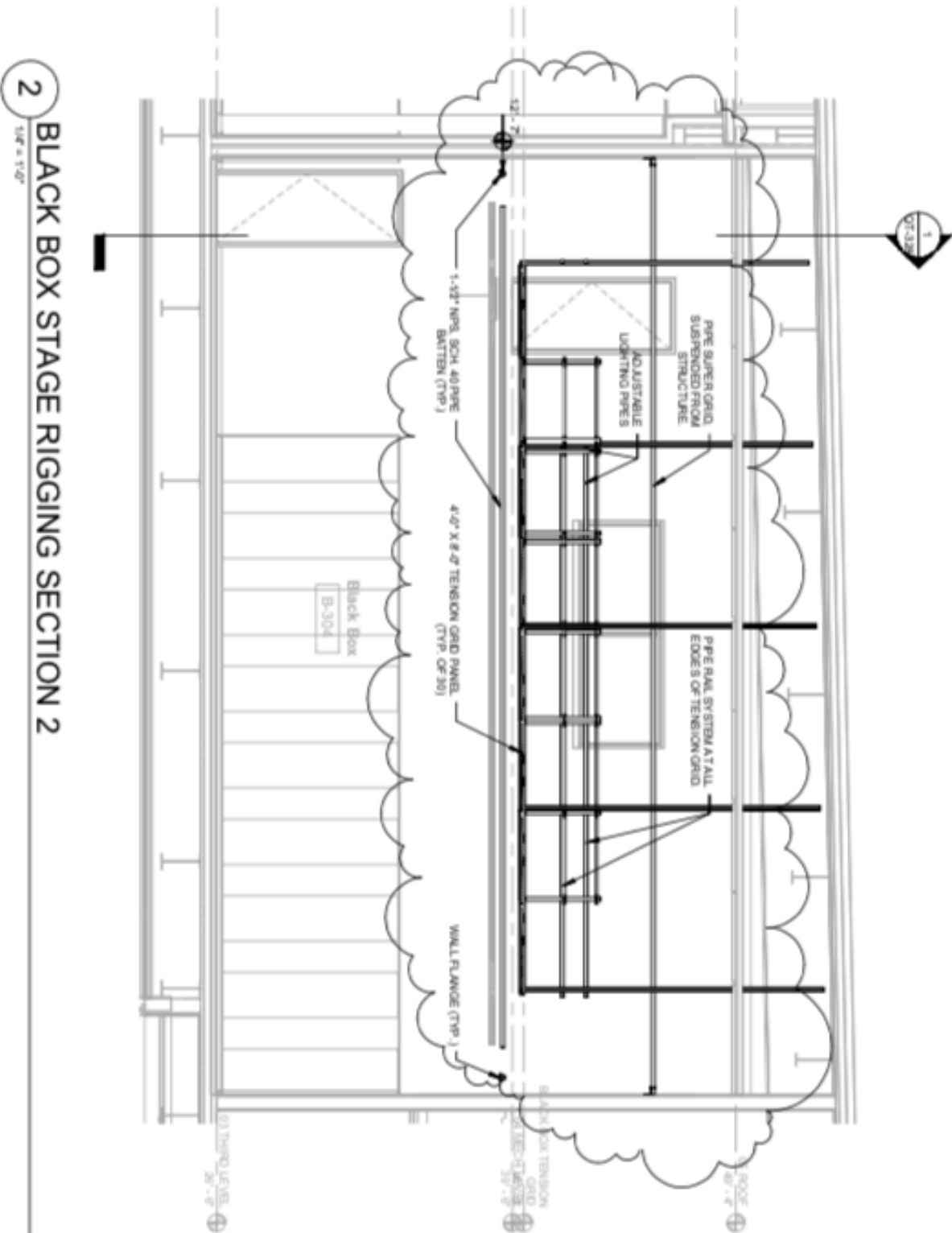
INTERIOR ELEVATION



Rauh Theatre



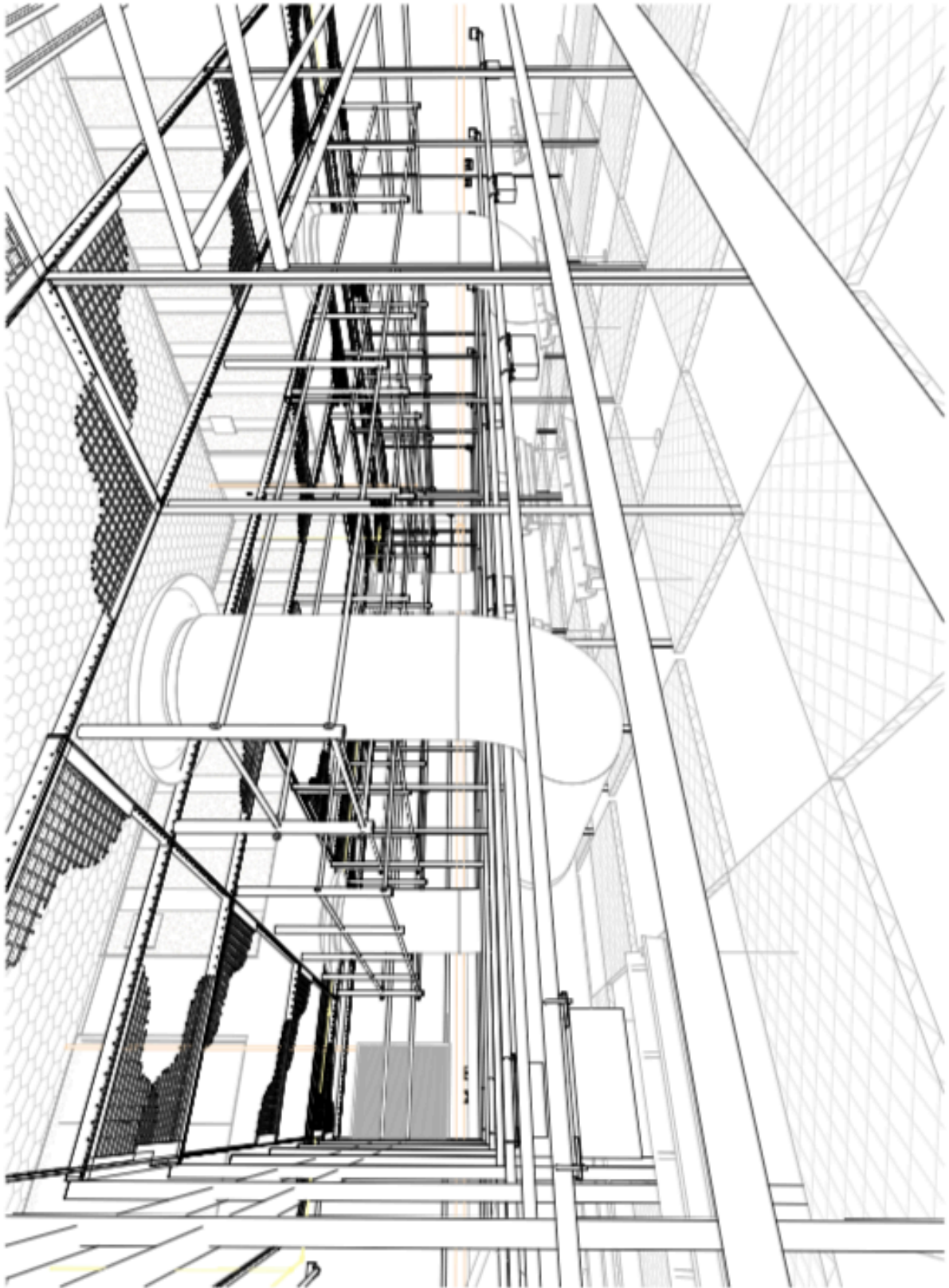
Rauh Theatre



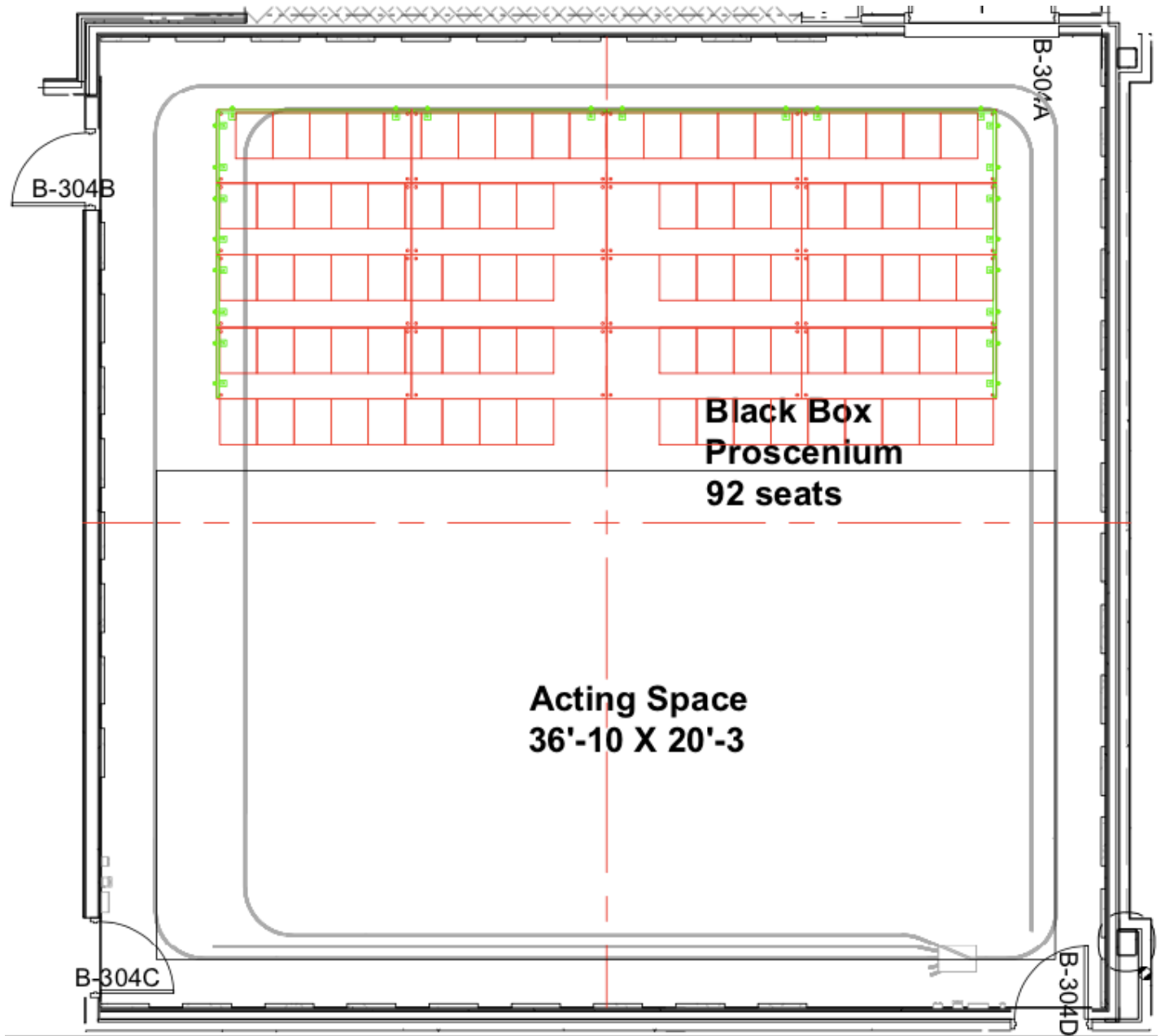
Rauh Theatre

3

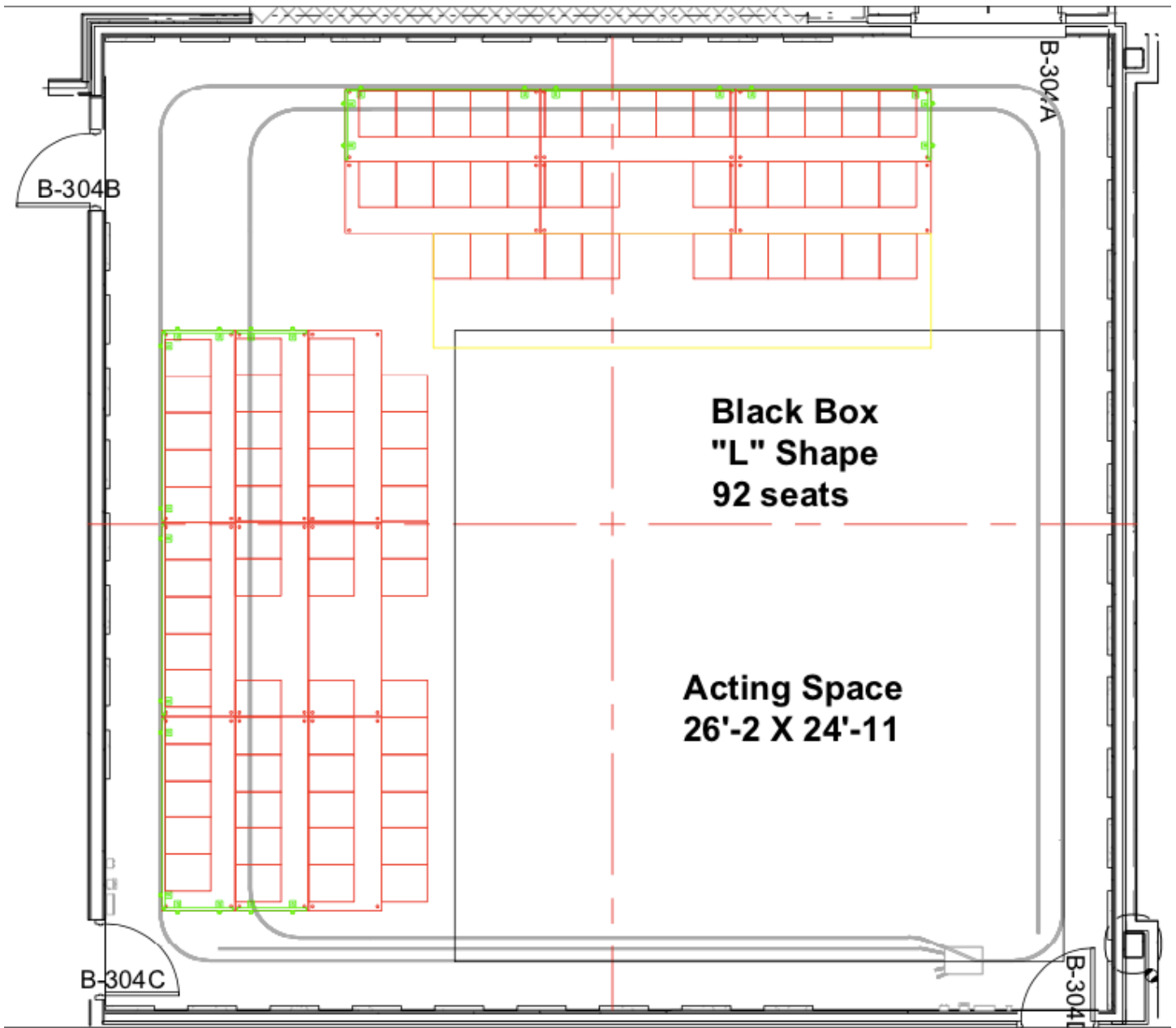
Black Box-TensionGrid Isometric View from Entry



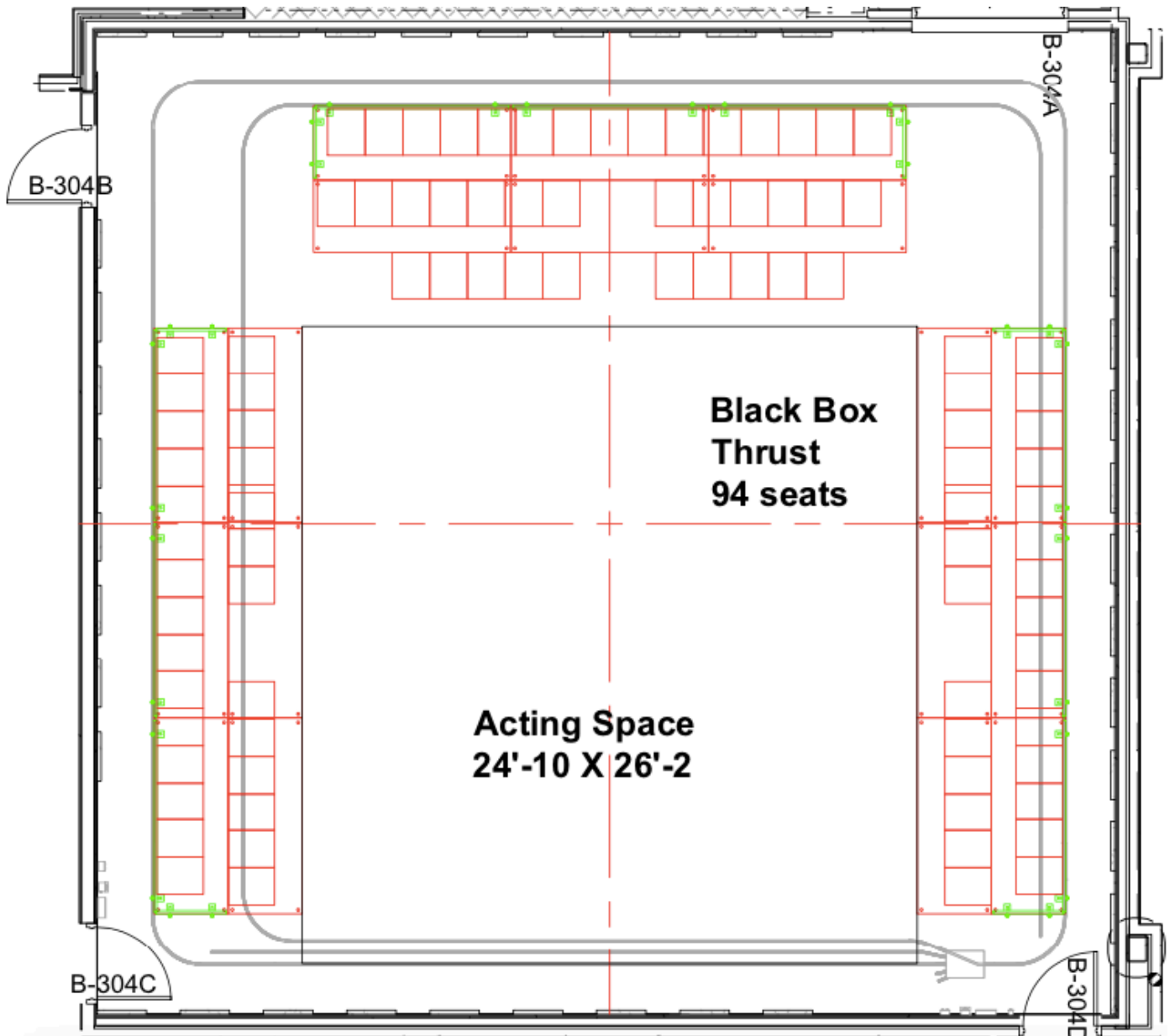
Rauh Theatre



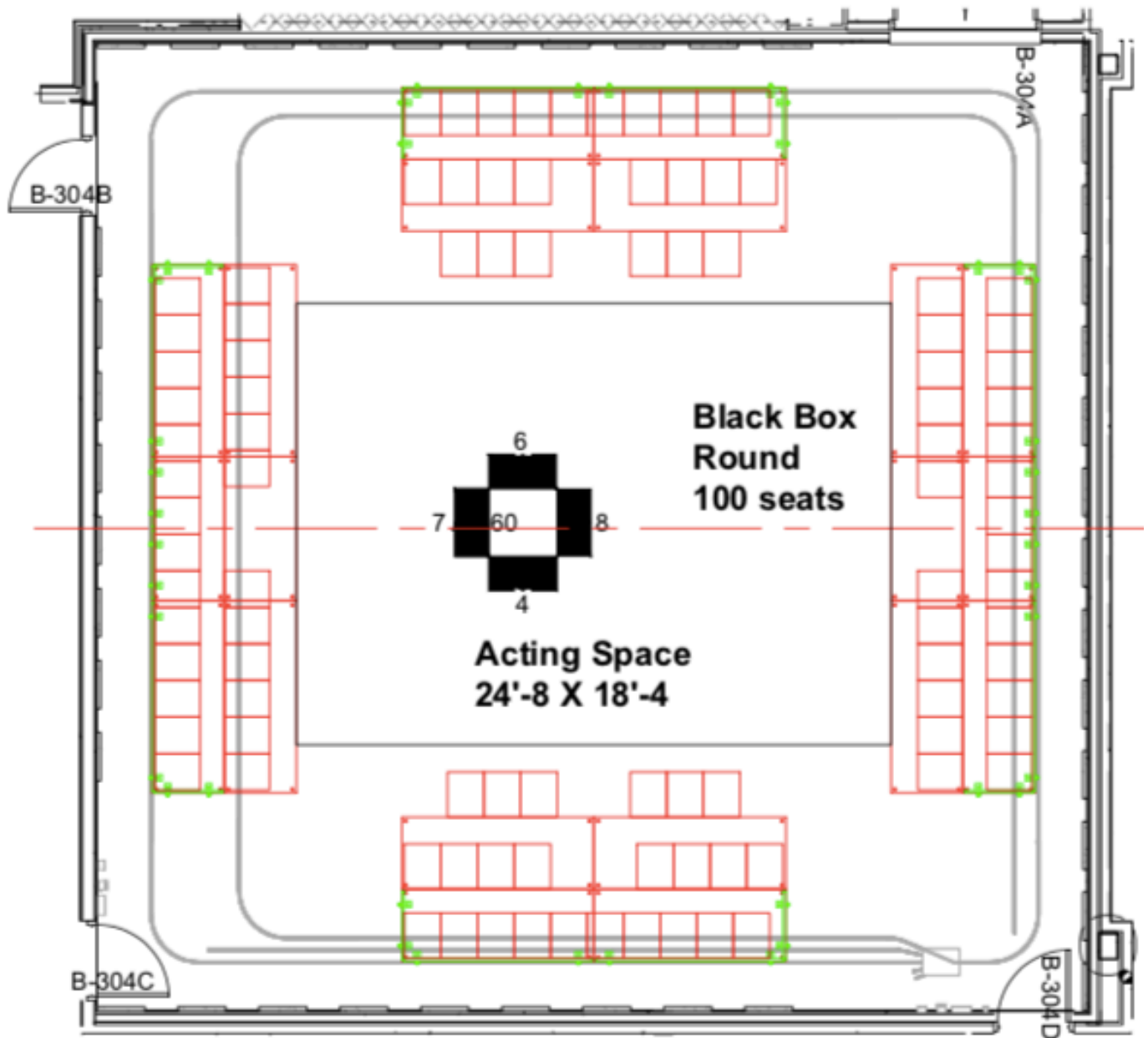
Rauh Theatre



Rauh Theatre



Rauh Theatre



Rauh Theatre

Stage Specifications

The Rauh Theatre

Stage dimensions

- The Black Box Theatre can seat 92 to 99.
- This area can convert from proscenium seating to thrust to arena style seating.

Electrics

Console: ETC Expression 3, 2 screens, wired remote

Dimmers: 96 2.4Kw ETC sensors, 10 6Kw ETC sensors

Dimmer Distribution:

All 96 dimmers go through a hard patch in the booth. 144 circuits are distributed as follows:

- Stage Deck: 8 6ct. plug boxes (2 are covered by acoustic panels.)
- NW corner Tension Grid: 48 cts.
- SW corner Tension Grid: 48 cts.

Patching:

-There is only one ETC Net3 system for the whole building. Please be very cautious in choosing which universe to patch in. Each console is configured to mask the interconnected nature of the building, but it is possible to accidentally take control of

Rauh Theatre

another space. Universe 1 is reserved for dimmers, Universe 2 and 3 is for house and work lights, and universe 4 through 9 can be used for DMX devices.

-Please reserve channels 500 – 515 for house light and work light channels.

Locations & Position labels

-There isn't yet a standard labeling system for the pipes in the catwalk grid.

-Please include a compass rose on your light plot. (The booth is on the West wall.)

House lights

-There are no permanently installed house lights. Generally, each pendant light will cover 1.5 to 2 seating risers. If you'd like to have input on the location of the pendants, please let me know early.

Lighting Fixtures

- 4– 19° Phoenix (Blue)
- 36 – 26° Phoenix (White)
- 36 – 36° Phoenix
- 24 – 50° Phoenix (Red)
- 24 – 6" Fresnel
- 12 – 6" Plano-convex
- 32 – Par 64

Rauh Theatre

Audio

All systems run on a DANTE Network

1 YAMAHA QL 1 Channel Digital Mixing Console

1 Mac Mini with

- QLab
- Dante Virtual Soundcard
- Yamaha QL Manager
- Shure Wireless Workbench
- 1 iPad with Yamaha StageMix CL

6 RENKUS-HEINZ CFX 121-5R Active Loudspeakers

2 RENKUS-HEINZ CFX 151-5R Active Loudspeakers

2 RENKUS-HEINZ CFX 12s-5R Active Subwoofers

**See floating inventory for available microphones and monitor speakers*

Headset Communications

1 CLEARCOM MS-702 2 Channel Main Station

1 CLEARCOM BS-210 2 Channel Wireless Intercom Base Station

4 CLEARCOM RS-701 1 Channel Belt Packs

4 CLEARCOM BP-210 2 Channel Wireless Intercom Belt Packs

8 CLEARCOM CC-300 Intercom Headsets

Rauh Theatre

Video/Projections

Projection: while there is no dedicated projector or screen in this theater, the loose inventory of projectors and screens noted below can be used for projection content.

AV matrix switching and signal distribution: an AMX Enova DGX1600 Media Switcher for routing HD video signals throughout theater, with DX Link connectivity (Cat6 STP) in booth and on four wall plates surrounding the space, as well as in the catwalk above.

Computer source: a rack-mounted ADK Qube i7 PC with a single channel graphics card output can serve as a video source, with either Isadora or PowerPoint as playback software.

Cameras and monitors for stage managing and calling: a Panasonic AW-HE2P HD camera and an analog Honeywell HB75H IR camera to allow Stage Management to view and calling shows from video monitors, either in the booth, backstage or in the house.

Shared Inventory

Lighting Inventory

Audio Inventory

Video/Projection Inventory

Shared Inventory

Lighting Inventory

**Subject to availability*

Lighting Fixtures

- 6 – 3” Fresnel
- 20 – Par 16
- 6 – HUI 3 cell Cyc
- 6 – L&E 6’ Zip Strip
- 4 – Par 38 Strips
- 25 – Source4 LED Lustr 50 deg
- 25 – ETC Vivid LED Par
- 2 – Varilite 2500 Spot
- 6 – Clay Packy Alpha300 Spot
- 3 – Varilite 500 Wash
- 6 – Clay Packy Sharpy Wash
- 2 – Canto Followspot

Fixture Accessories

- 4 – “B” size gobo rotator
- 1 – “M” size gobo rotator
- 1 – I Pro slide projector
- 6 – 6” Barndoors for Fresnels (7 1/2” frame)
- 6 – 6” Barndoors for Source 4 Pars/Parnels (7 1/2” frame)
- 6 – 10” Top Hats
- 10 – 7.5” Top Hats
- 6 – 6.25” Half Hats
- 6 – 7.25” Half Hats
- 3 – Drop-in Iris kits for Source 4
- 2 – Followspot handle for Source 4

Shared Inventory

Miscellaneous

- 2 – 16” Mirror Ball
- 1 – Ultratec Stage fogger
- 1 – Radiance Hazer
- 2 – Litronics 4X600 dimmer
- 1 – Litronics 2X1200 dimmer
- 8 – 4 rung pipe ladders
- 2 – 3 rung pipe ladders
- 3 – 10’ triangle truss
- 2 – 10’ flat truss
- 8 – 10’ boom

Audio Inventory

**Subject to availability*

Wireless Microphones

- RACK A
 - 1 FURMAN PL-PROC Power Distro
 - 1 SHURE UA845UWB Antenna Distributor
 - 2 SHURE Whip Antenna
 - 3 SHURE ULXD – 4Q 4 channel Receiver
 - 12 SHURE ULXDI Bodypack Transmitter
- RACK B
 - 1 FURMAN PL-PROC Power Distro
 - 2 SHURE Whip Antenna
 - 2 SHURE ULXD – 4Q 4 channel Receiver
 - 8 SHURE ULXDI Bodypack Transmitter

Shared Inventory

- RACK C
 - 1 SHURE UA845UWB Antenna Distributor
 - 2 SHURE Whip Antenna
 - 2 SHURE ULXD – 4Q 4 channel Receiver
 - 8 SHURE ULXDI Bodypack Transmitter
- RACK D
 - 1 FURMAN PL-PROC Power Distro
 - 2 SHURE Whip Antenna
 - 2 SHURE ULXD – 4Q 4 channel Receiver
 - 8 SHURE ULXDI Bodypack Transmitter
- RACK E
 - 2 SHURE Whip Antenna
 - 2 SHURE ULXD – 4D 2 channel Receiver
 - 4 SHURE ULXH Bodypack Transmitter

*All theaters have 2 Shure UA874 Active Directional Antennas available

Wireless Handheld Microphones

- 4 Shure ULXD2 Handheld Microphones

Earset Microphones

- 5 Point Source CO-8W (4 Beige/ 1 Brown)
- 16 Point Source CO-5W (Beige)
- 10 Countryman E6 (Beige/Tan)
- 14 Microphone Madness PSM (Beige)
- 6 Microphone Madness PSM (Brown)

Lavaliere Microphones

- 11 Countryman B3 (Beige)

Shared Inventory

- 10 Countryman B3 (Black)
- 3 Microphone Madness PSM-L (Beige)
- 7 Microphone Madness PSM-L (Black)
- 5 Shure WL-93 (Beige)
- 5 Shure WL-93 (Black)

Dynamic Microphones

- 4 Shure SM 57
- 9 Shure BETA 57
- 1 Shure SM 58
- 9 Shure BETA 58-A
- 2 Shure SM 55 SH Classic
- 1 Shure PG 52

Condenser Microphones

- 5 Shure PG 81
- 2 Shure KSM 141
- 3 ATM 33a
- 3 ATM PRO 37
- 4 ATM 350 Mini with mount
- 4 ATM 835 B Shotgun
- 2 ATM U853R Hanging Choral Mic
- 2 AKG C519 Micro Mic Clip On

Drum Package (PG DMK)

- 1 PG 52 Cardioid Dynamic Kick Drum
- 3 PG 56 Snare / Tom
- 2 PG 81 Condenser

Shared Inventory

Boundary Mics

- 7 CROWN PCC 160 Phase Coherent Cardioid Mic
- 3 ATM 851

Switch Mics

- 1 ATM Pro 41 Dynamic with switch
- 1 Shure PG 48 Dynamic with switch
- 3 Shure PG 58 Dynamic with Switch

Direct Boxes

- 5 BEHRINGER ULTRA D/I Active Direct Box
- 2 Boss DI-1 Active Direct Box

Microphone Stands

- 20 Straight Microphone Stands
- 6 Tripod Microphone Stands
- 10 Short Microphone Stands
- 14 Boom Arms
- 4 OnStage Stands Speaker Stands

DANTE

- 2 YAMAHA Rio 3224
- 2 YAMAHA Rio 1608

MIXERS

- 4 SOUNDCRAFT Expression 1 16 Channel Digital Mixer

Shared Inventory

- (with 4 SOUNDCRAFT 16i mini stagebox and MADI card)
- 1 MACKIE 1604 VLZ3 16 Channel Analog Mixer

AMPLIFIERS

- 3 QSC GX5 500W 2 channel Power Amplifier
- 1 QSC PL340 800W 2 channel Power Amplifier
- 1 CROWN XLS1000 200W 2 channel Power Amplifier
- 1 CREST V1500 1500W 2 channel Power Amplifier

SPEAKERS

- 16 QSC K10.2 Active Loudspeaker
- 4 QSC KSub Active Subwoofer
- 2 JBL AC 28/95 2X8 Speakers
- 5 JBL Marquis Series MS 28 Speakers
- 4 PEAVEY PV 12 M Wedge Monitors
- 4 TOA SL 122 M Wedge Monitors
- 3 TOA F-160G Speakers
- 2 Mackie MR 5 Self Powered Speaker
- 2 YAMAHA MSP 5 Self Powered Speakers
- 1 RokIt Self Powered Speaker

EFFECTS

- 1 LEXICON MPX 500 Effects Generator
- 1 LEXICON MX 300 Effects Generator

SNAKES

- 3 PROCO SMA1604FBX-50 50' 16X4 Snake
- 1 PROCO StageMaster 75' 16X4 Snake

Shared Inventory

CLEARCOM

- 1 CLEARCOM PS-702 2 Channel Intercom Power Supply
- 1 CLEARCOM TW-12C Single Channel Interface

**INVENTORY SUBJECT TO CHANGE*

WIRELESS MICROPHONE FREQUENCY CHART

#	Frequency	#	Frequency
	477.025		511.300
	478.700		512.150
	479.750		513.725
	480.600		515.200
	481.100		515.575
	482.100		516.925
	483.675		517.675
	486.075		520.000
	486.475		521.850
	486.950		522.925
	488.300		524.700
	489.500		525.525
	491.925		526.200
	492.050		527.000
	492.875		527.450
	501.775		528.625
	502.825		529.600
	503.175		530.425
	505.450		530.825
	507.300		531.425
	508.150		532.900
	509.425		554.950
	510.200		557.375

Shared Inventory

SUBJECT TO CHANGE

Video/Projections

**Subject to availability*

In addition to the theater-specific equipment, the following loose pool of equipment can be scheduled for use on productions and events:

Projectors and lenses:

- Two (2) Panasonic PT-DW750 DLP projectors, with the following optional lenses:
 - Two (2) TKGFO156-1 Standard Zoom lenses (1.82-2.55:1 throw)
 - One (1) ET-DLE085 short throw zoom (0.84-1.04:1 throw)
 - One (1) ET-DLE150 zoom (1.38-1.99:1 throw)
- Two (2) Barco RLM W14 projectors, with the following optional lenses:
 - Two (2) R9862000-TLD+ (0.73:1) short throw fixed lens
 - One (1) R9862010-TLD+ (1.5 - 2.0:1) zoom lens
 - One (1) R9862020-TLD+ (2.0 - 2.8:1) zoom lens

Projection screens:

Shared Inventory

- Four (4) Fast-Fold 104”x140” DualVision projection screens

AV signal distribution:

- Eight (8) AMX-FG1010-500 DXLink Receiver
- Three (3) AMX FG1010-310 DXTX DXLink Transmitter Units.

*These can be used in conjunction with the AMX Enova signal distribution system in a given theater, or can be used as TX-RX pairs as stand-alone, point-to-point HDMI signal extenders to route HD signal up to 100 meters (328 ft).

Shared Inventory

Stage Drapery

STAGE DRAPERY SCHEDULE

REFER TO DRAWINGS FOR INSTALLATION LOCATIONS FOR DRAPERY. QUANTITIES INDICATED IN 'BASE' COLUMN SHALL BE FURNISHED AND INSTALLED UNDER THE BASE BID CONTRACT.

REFER TO SPECIFICATION 11 61 43 FOR ADDITIONAL DRAPERY INFORMATION.

ALL DRAPERY DIMENSIONS SHALL BE FIELD VERIFIED AGAINST INSTALLED BATTEN AND TRACK ELEVATIONS PRIOR TO COMMENCEMENT OF SEWING.

LOCATION	QTY. TO FURNISH	DRAPERY TYPE / NAME	COLOR	ADDED FULLNESS	FINISHED DIMENSIONS (PER PANEL)				HANGING NOTES	OTHER NOTES
					WIDTH	HEIGHT	ONSTAGE	OFFSTAGE		
AUDITORIUM ORCHESTRA PIT	6	ACOUSTIC DRAPERY PANEL	ARCH (1)	50%	7'-0"	10'-6"	4"	4"	6" CHAIN	BOTTOM TO BE +12" A.F.F.
AUDITORIUM STAGE	1	MAIN TEASER	ARCH (1)	50%	48'-0"	10'-0"	4"	4"	6" CHAIN	4
AUDITORIUM STAGE	2	MAIN CURTAIN PANEL	ARCH (1)	50%	32'-6"	22'-0"	24"	4"	6" CHAIN	4
AUDITORIUM STAGE	6	VELOUR LEG	BLACK	NONE	16'-0"	23'-0"	4"	4"	6" CHAIN	4
AUDITORIUM STAGE	6	VELOUR BORDER	BLACK	NONE	56'-0"	10'-0"	4"	4"	6" CHAIN	4
AUDITORIUM STAGE	8	VELOUR TAB	BLACK	NONE	8'-0"	23'-0"	4"	4"	6" CHAIN	4
AUDITORIUM STAGE	4	MID STAGE TRAVELER PANEL	BLACK	50%	31'-0"	22'-0"	24"	4"	6" CHAIN	4
AUDITORIUM STAGE	1	VELOUR BLACKOUT PANEL	BLACK	NONE	56'-0"	23'-0"	4"	4"	6" CHAIN	4
AUDITORIUM STAGE	2	VELOUR BLACKOUT PANEL - 1/2	BLACK	NONE	29'-0"	23'-0"	4"	4"	6" CHAIN	4
AUDITORIUM STAGE	1	SHARKSTOOTH SCRIM	BLACK	NONE	56'-0"	22'-0"	4"	4"	PIPE POCKET WITH SKIRT	4
AUDITORIUM STAGE	1	SHARKSTOOTH SCRIM	WHITE	NONE	56'-0"	22'-0"	4"	4"	PIPE POCKET WITH SKIRT	4
AUDITORIUM STAGE	1	MUSLIN CYC	CBS GRAY	NONE	56'-0"	23'-0"	4"	4"	PIPE POCKET WITH SKIRT	4
ADAPTABLE THEATRE	13	VELOUR DOUBLE SIDED LEG	BLACK	NONE	10'-0"	19'-0"	4"	4"	6" CHAIN	4
ADAPTABLE THEATRE	3	VELOUR BORDER	BLACK	NONE	52'-5"	5'-0"	4"	4"	VELCRO HEIGHT ADJUST	4
ADAPTABLE THEATRE	2	VELOUR TRAVELER PANEL	BLACK	NONE	31'-4"	19'-0"	24"	4"	6" CHAIN	4
ADAPTABLE THEATRE	1	SHARKSTOOTH SCRIM	BLACK	NONE	52'-5"	19'-0"	4"	4"	PIPE POCKET WITH SKIRT	4
ADAPTABLE THEATRE	1	MUSLIN CYC	CBS GRAY	NONE	63'-0"	19'-0"	4"	4"	PIPE POCKET WITH SKIRT	4
BLACK BOX	12	VELOUR DOUBLE SIDED LEG	BLACK	NONE	10'-0"	11'-6"	4"	4"	6" CHAIN	4
BLACK BOX	2	VELOUR BORDER	BLACK	NONE	30'-5"	3'-0"	4"	4"	VELCRO HEIGHT ADJUST	4
BLACK BOX	1	SHARKSTOOTH SCRIM	BLACK	NONE	30'-5"	11'-6"	4"	4"	PIPE POCKET WITH SKIRT	4
BLACK BOX	1	MUSLIN CYC	CBS GRAY	NONE	36'-6"	11'-6"	4"	4"	PIPE POCKET WITH SKIRT	4
SOUND STAGE	12	VELOUR DOUBLE SIDED LEG	BLACK	NONE	10'-0"	13'-6"	4"	4"	6" CHAIN	4
SOUND STAGE	2	MUSLIN CYC	CBS GRAY	NONE	38'-6"	13'-6"	4"	4"	PIPE POCKET WITH SKIRT	4
SOUND STAGE	3	CHROMA GREEN BACKGROUND	C.G.	NONE	31'-10"	13'-6"	N/A	N/A		4
SOUND STAGE	1	CHROMA GREEN GROUND CLOTH	C.G.	NONE	30'-0"	20'-0"	N/A	N/A	DUCK OR FOAM BACKED	4
REHEARSAL SPACE 01	1	MIRROR MASKING DRAPERY PANEL	ARCH (1)	50%	34'-0"	10'-6"	4"	4"	6" CHAIN	BOTTOM TO BE +2" A.F.F.
REHEARSAL SPACE 01	1	WINDOW MASKING DRAPERY PANEL	ARCH (1)	50%	10'-6"	10'-6"	4"	4"	6" CHAIN	BOTTOM TO BE +2" A.F.F.
REHEARSAL SPACE 02	1	MIRROR MASKING DRAPERY PANEL	ARCH (1)	50%	31'-0"	10'-6"	4"	4"	6" CHAIN	BOTTOM TO BE +2" A.F.F.
REHEARSAL SPACE 03	1	MIRROR MASKING DRAPERY PANEL	ARCH (1)	50%	40'-6"	10'-6"	4"	4"	6" CHAIN	BOTTOM TO BE +2" A.F.F.

KEYNOTES:

- 1 REFER TO ROOM FINISH SCHEDULE KEY ON ARCHITECTURAL DRAWINGS
- 2 CLIP TO TRAVELER TRACK CARRIERS USING SNAP CLIPS (TO BE FURNISHED BY DRAPERY MANUFACTURER).
- 3 TIE DIRECTLY TO PIPE BATTEN OR RAILING WHERE SHOWN USING TIE LINE (TO BE FURNISHED BY DRAPERY MANUFACTURER).
- 4 FURNISH DRAPERY TO OWNER FOR INSTALLATION BY OWNER PERSONNEL.

Shop Policies

Costume Shop

Shop Policies

Costume Policies

- Designers should not cut, alter, dye, paint, glue or distress costumes without approval from the costume supervisor.
- Barcodes are used to identify costumes. No barcodes should be removed or sprayed or altered in anyway. If the barcodes need to be covered, please hand sew fabric over top.
- Please check w/ the costume studio manager or wardrobe inventory supervisor as to what area theatres we maintain a mutual lending policy.
- Costumes and costume related items on loan from outside theaters or rental companies must be identified and listed with the wardrobe supervisor so they can be returned to the proper owner. Borrowed or rented items that are not used in a production must be returned to the loaning organization as soon as possible by the designer or designer's assistant.
- Designers are expected to attend all dress rehearsals and previews unless prior arrangements have been made w/ director and production manager.
- Any costume piece that is pulled for a production and not utilized must be restocked by the designer/assistant designer.
- Dress parades are not usually held. If one is requested, it should be scheduled in accordance w/ the production manager before the start of rehearsals.
- Costumed media photo calls must be scheduled 2 weeks in advance w/ director, PR, and stage management as to which actors and costumes will be utilized. Media photos are limited to 3 costumed actors.
- Each production is assigned shop and rack space. Designers are responsible to maintain order in that space and costume shop in general.
- Rehearsal skirts, shoes and kneepads, elbow pads, etc., MUST be provided by student.
- Rehearsal skirts, shoes and kneepads, etc., for The REP are provided for based on the needs of the production.
- Please contact Joan Markert or Michael Montgomery with any wardrobe questions.

Rental Inquiries

Properties Rentals

Rental Inquiries

PROP RENTALS

LENDING HOURS: By appointment only.
Appointments must be made 24 hours in
advance. Thanks!

Please Contact:

John Forton

Prop Master

(412) 392-8130

jforton@pointpark.edu

Katie Mikula-Wineman

Assistant Prop Master

(412) 392-8131

kmikula@pointpark.edu

Rental Inquiries

PROP RENTALS

The Pittsburgh community is welcome to borrow props & furniture from the Pittsburgh Playhouse Prop Shop for their productions or films. We will loan most of our stock with the **exception of any weaponry, drugs/ smoking, and materials/tools from the shop.**

- To make a prop request, please call or email at least 24 hours in advance of pickup:

- o **John Forton** (412-392-8130) jforton@pointpark.edu

- o **Katie Mikula-Wineman** (412-892-8131) kmikula@pointpark.edu

- o You will receive an email to confirm your appointment. Appointments cannot be

guaranteed without confirmation. We are available Monday-Friday 10am-4:00pm. o Please provide in your request:

- List of props you are looking for

- Time period your production takes place ▪ Any Reference Images you may have

- o We will get these items together before you arrive. If you want to just browse our stock, please note we may be limited in appointment times due to our schedule.

- If you will be more than 30 minutes late, we may ask to reschedule your appointment.

- We will have a form for you to fill out with your contact information and what project you are working on. It outlines what condition the prop is in when you get it and how we expect it will be returned (in the same condition or noted of alterations). You are assuming liability for the prop and will specify an estimated return date at this time. You are responsible for all transportation of all props you are borrowing. We cannot deliver or pick up props or furniture.

- Please schedule a return appointment. Please do not leave anything in the Prop Shop without a Return Appointment. We will be checking in each item individually. If anything was damaged or missing, fines will be assessed at this time and you can pay by check. Late or unscheduled returns will be noted and could result in the revoking of your borrowing privileges.

Rental Inquiries

The Pittsburgh Playhouse

Properties Lending Agreement

Lending Agreement: This document serves as an agreement between the Pittsburgh Playhouse and the borrower for the specified production. Borrower assumes responsibility for the borrowed items from the moment the items leave stock until they are returned to the Prop Master.

Rental Limitations: The Pittsburgh Playhouse reserves the right to restrict rentals based upon in-house needs with the current season. The Pittsburgh Playhouse does not lend any type of weaponry (swords, knives, guns, etc...), smoking/ drug props, fake money, or materials/ tools from the Prop Shop.

Usage: All items are expected to be used only for the agreed upon production and during the time frame in which the production is running. All items are expected to be treated with care and returned in the same condition they were borrowed in.

Alterations: Alterations to props are not permitted unless otherwise approved of by the Prop Shop staff. Any planned changes must be noted in the original documentation when signed.

Damages: In the event that a prop is damaged or lost during the course of the rental, the borrower will pay the cost of the item or find a replacement for the item. The value of the item will be assessed by the Prop Master. Payments are accepted in the form of a check made out to Point Park University and must be paid by the end of the semester or an invoice will be sent to the borrower.

Returns: Return dates must be identified when borrowing items. Appointments can be scheduled in advance for Tuesdays 10am-3pm unless otherwise discussed. Under no circumstances should returned props be left unattended or dropped off in the Prop Shop without checking them in. Late or unscheduled returns will result in revoking of your borrowing privileges.

I HAVE READ AND UNDERSTAND THE TERMS AND CONDITIONS OF
BORROWING PROPS FROM THE PITTSBURGH PLAYHOUSE. I ACCEPT THE
TERMS AND CONDITIONS.

Borrower Printed Name: _____ Date: _____

Rental Inquiries

Signature: _____

Authorized Lender's Signature: _____

Pittsburgh Playhouse
Prop Shop
412-392-8130/8131
350 Forbes Avenue
Pittsburgh, PA 15222

Today's Date: _____

Anticipated Return Date: _____

Prop Rental Form

Name:	Production/Use:
Title/Position:	
Phone:	Company/Group/ Class:
Email:	

QTY	ITEM DESCRIPTION	CONDITION	ALTERATIONS

Rental Inquiries

I understand that I am responsible for the above items and will return the borrowed items on the date indicated in good condition. I understand that I will be held financially liable if the above items are lost or damaged.

Borrower's Signature: _____ Date: _____

Authorized Lender's Signature: _____ Date: _____