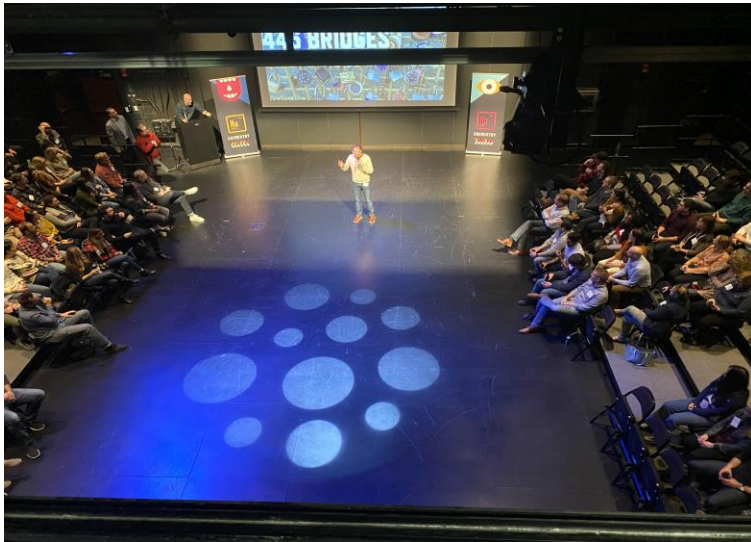


PITTSBURGH PLAYHOUSE

POINT PARK UNIVERSITY



Venue Fact Sheet



The Award Winning Pittsburgh Playhouse at Point Park University





The Award Winning Pittsburgh Playhouse at Point Park University

350 Forbes Avenue

Pittsburgh, PA 15222

www.pittsburghplayhouse.com

Request for Playhouse Space: TBA Link

Conference and Event Services

Director, Christina Morton

o: 412.392.4207 email: cmorton@pointpark.edu

Asst. Director, Lauren Doyle

o: 412.392.6195 email: lblum@pointpark.edu

Culinary Catering

Catering Manager, Jennie Lichtenstein

c: 724.787.6513 email: jlichtenstein@culinartc.com

Pittsburgh Playhouse

Asst. Vice President and Managing Director, Drew Martorella

o: 412.392.8178 email: dmartorella@pointpark.edu

Director of Production, Alicia DiGiorgi

o: 412.392.8103 email: ademara@pointpark.edu

Event Technical Coordinator, Katie Colwell

o: 412.392.8126 email: kcolwell@pointpark.edu

Venue Information

After 28 months of construction, the painstaking deconstruction and reconstruction of three historic facades, and the unprecedented restoration of a 22 stained-glass-paneled ceiling from Pittsburgh's historic Stock Exchange Building, the gleaming new Pittsburgh Playhouse is ready for its close-up. Pittsburgh Playhouse at Point Park University officially opened its doors on October 13, 2018 the Pittsburgh Playhouse hosted a ticketed gala event that included an elegant reception, performance, dinner and dancing.

A 90,411 square-foot theater complex, the Pittsburgh Playhouse features:

- A total of 91 rooms including a magnificent lobby space that boasts a three-story wide-open space with natural light
- A grand staircase and tucked-in spaces for students to lounge and gather
- The 550-seat PNC Theatre whose backstage and inner workings are visible from the street, resulting in an intentional glimpse into performing arts classes
- The main floor which includes an enormous paint shop, a 2,738-square-foot soundstage three stories high, a 15-foot-high catwalk and 24-foot-high ceilings to provide professional-level learning opportunities to students in multiple disciplines, including cinematography, audio work, lighting work and aesthetics.

Main Lobby

Capacity:

Registration/Cocktail Reception: 300

Seated Meal: 120 seats

Seated Presentation: 100 seats

ADA Accessible

PNC Theatre

Seating Capacity: 548

Capacity: 570

ADA Accessible

Highmark Theatre

Seating Capacity: 200

Capacity: 245

ADA Accessible

Rauh Theatre

Seating Capacity: 99

Capacity: 127

ADA Accessible

Lower Level 08 & 09

PNC Dressing Room

Capacity: 37

ADA Accessible

Located a floor below theatre

Lower Level 18 & 19

Highmark Dressing Room

Capacity: 34

ADA Accessible

Located a floor below theatre

307 & 308

Rauh Theatre Dressing Room

Capacity: 21

ADA Accessible

Located behind theatre

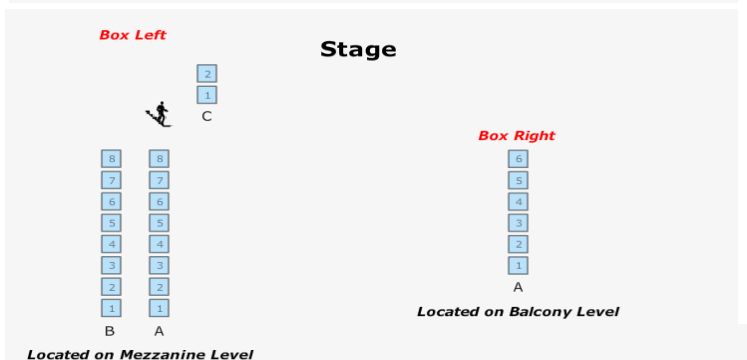
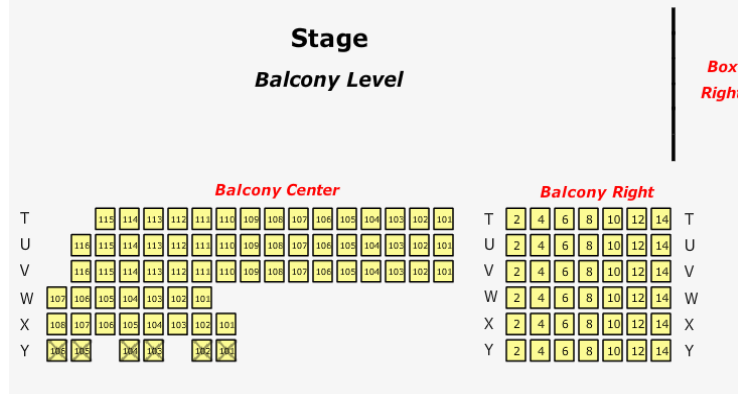
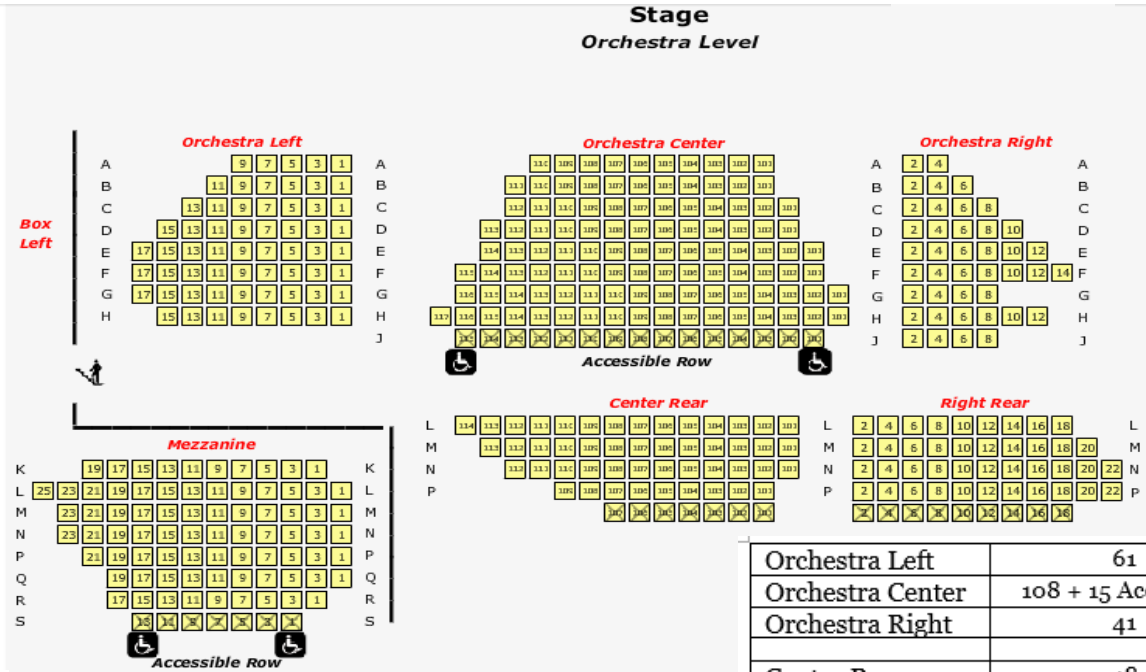
PNC Theatre



- The theatre can seat up to 550 patrons.
- The asymmetrical design of the theatre makes it feel full whether you have 100 seated guests or 550.
- Uniquely designed for the Playhouse, the Serapid Lift holds up to 30,000 lbs. in weight and has three positions including orchestra pit, house floor providing additional seating, and stage height which transforms the stage from proscenium to thrust.
- The PNC Theatre is ideal for a corporate presentation on the apron of the stage, theatrical performance, or meeting with reception on PNC stage



PNC Theatre

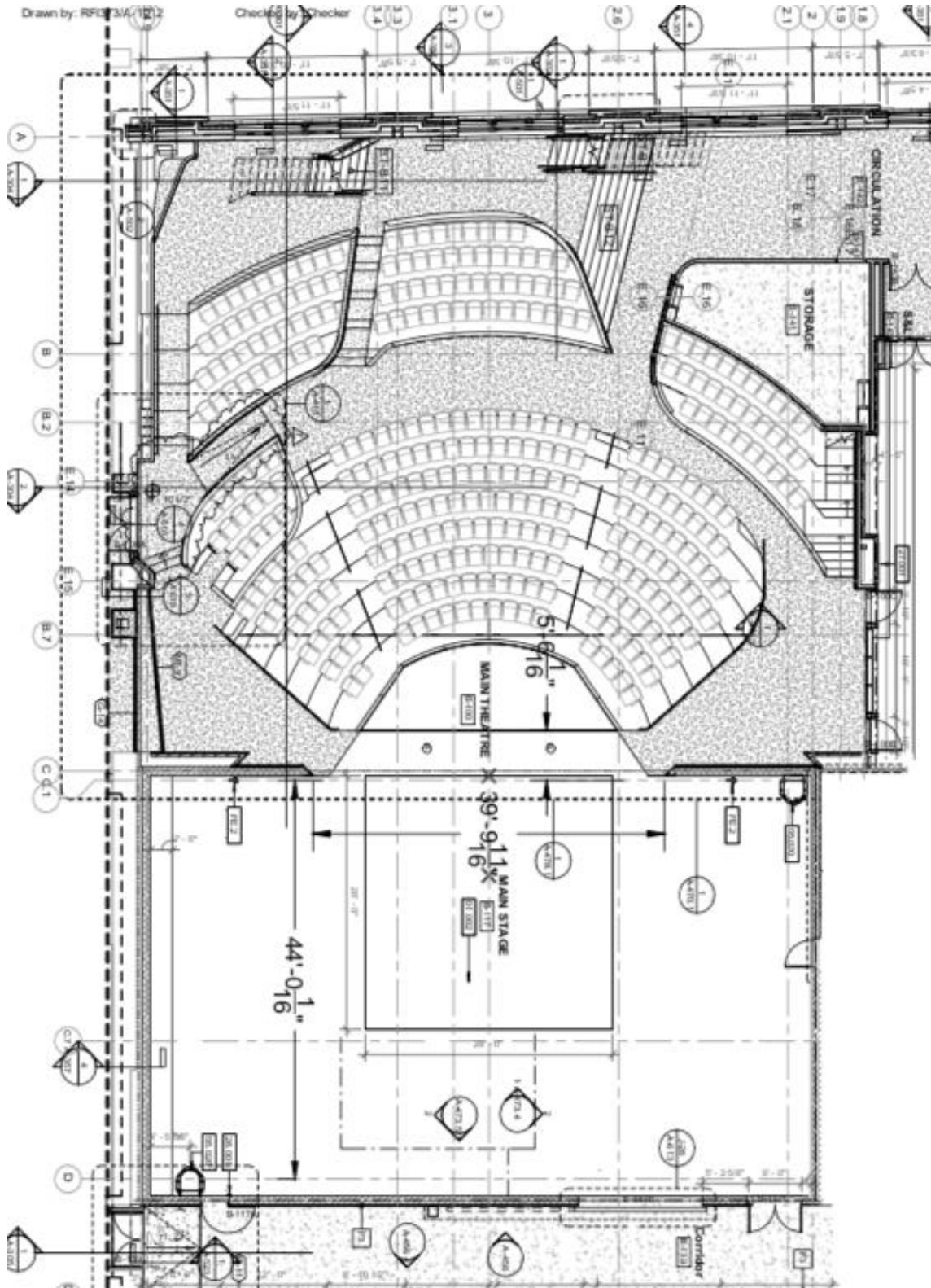


Orchestra Left	61
Orchestra Center	108 + 15 Accessible
Orchestra Right	41
Center Rear	48
Center Edge*	7
Right Rear	41
Right Edge*	9
Mezzanine	77
Mezzanine Edge*	7 Accessible
Balcony Center	68
Balcony Right	42
Box Left^	16 + 2 presidential box seats
Box Right^	6
Total	548

*Edge seating are removable seats that includes a counter for patrons to place drinks on during shows

^ Box seats are located on stage right and left on the second level. Although they are not private, they can be sold as a group or party area.

PNC Theatre



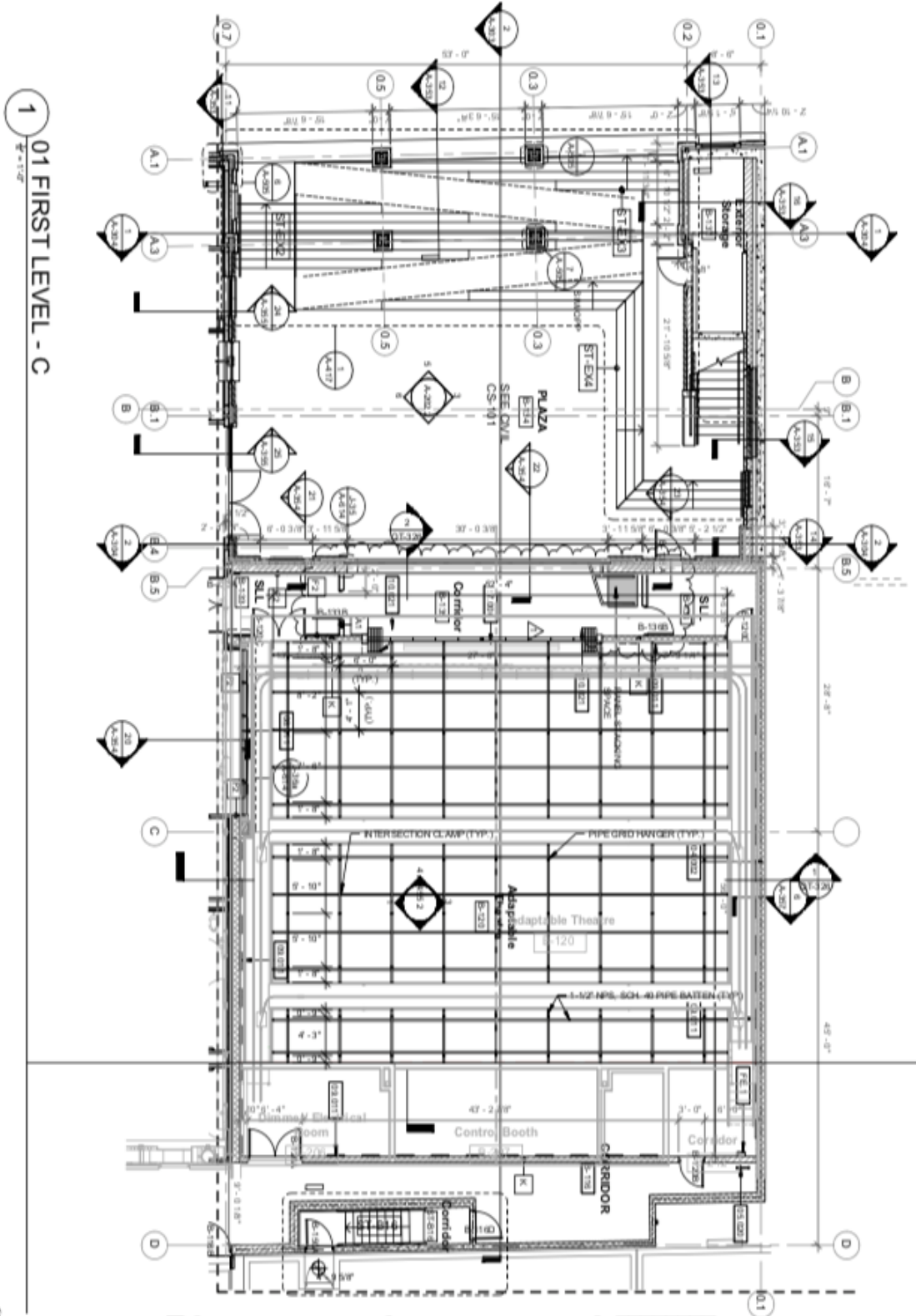
Highmark Theatre



- The Highmark Theatre is a transformational black box theatre that can seat up to 200 patrons in our theatrical seating banks.
- The space can be utilized as a corporate meeting space, theatrical performance venue, and reception venue with overflow to the Plaza and/or Main Lobby
- The space can be configured as a proscenium, thrust, or arena style seating.
- A one of a kind, glass back wall opens to an outside, mini-amphitheater allowing for unique event opportunities, such as outdoor seating for concerts, or indoor seating for an open-air performance.



Highmark Theatre



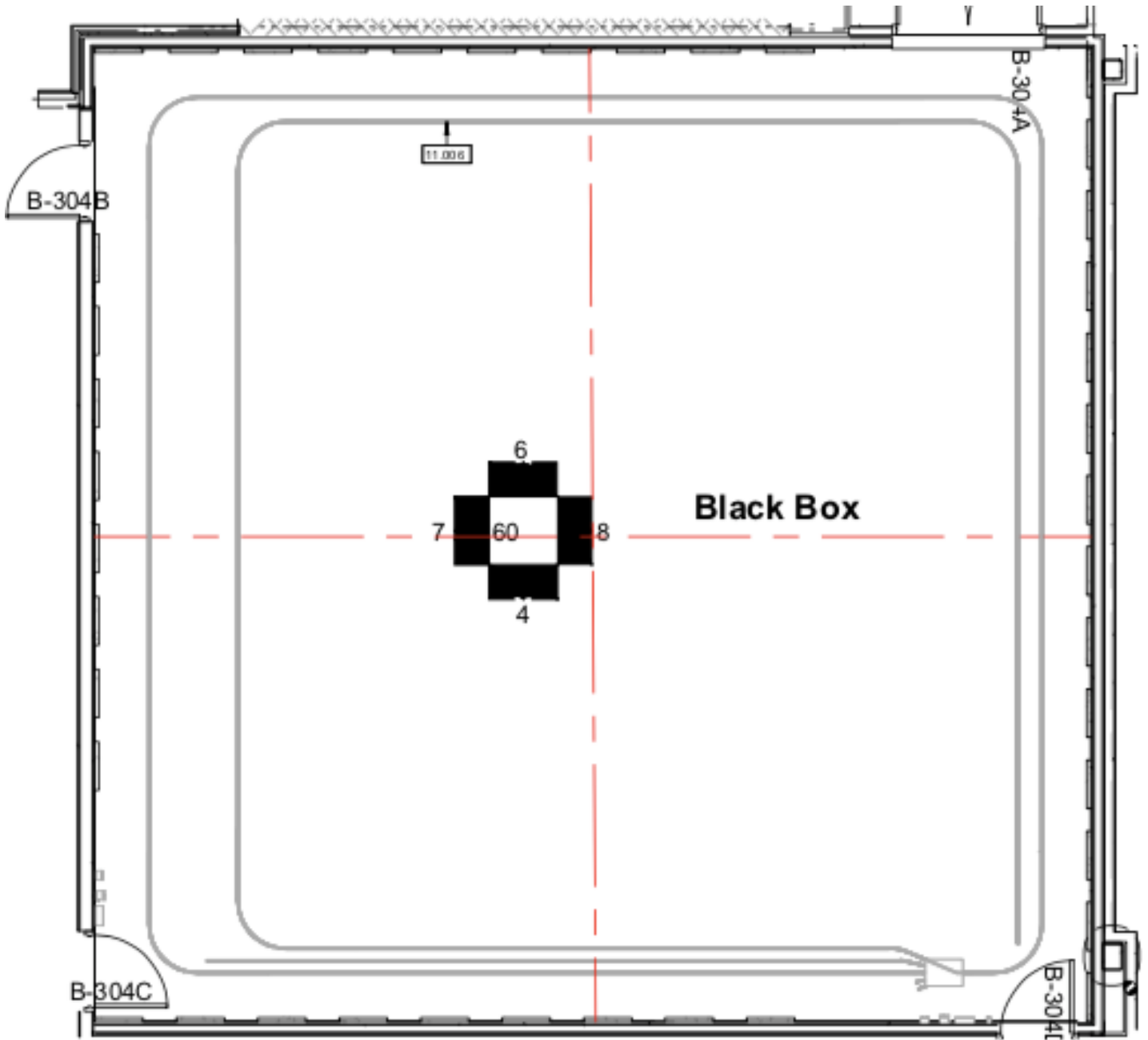
Rauh Theatre



- The Rauh Theatre is a traditional style Black Box Theatre
- This space can be configured as a proscenium, thrust, or arena style seating
- Based on seating configurations, between 92 and 99 patrons can be seated per performance
- The theatre will allow for intimate performances or meetings engaging audiences in a close, relaxed and personal way



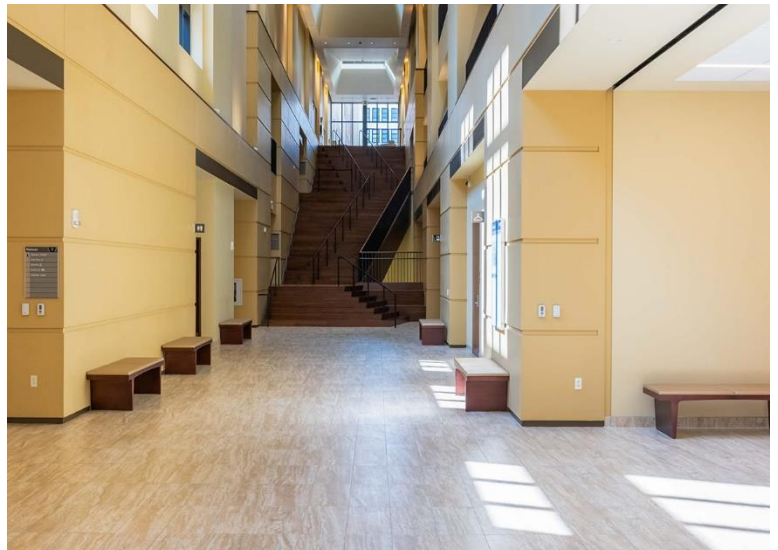
Rauh Theatre



Main Lobby



- Comfortably accommodates up to 280 patrons
- Main Lobby can act as your registration area, reception venue, or presentation area
- Main lobby location includes Refreshment stand and Coat Check
- Also is home to our Box Office



Plaza



- Plaza serves as the ADA entrance to the building
- Plaza is also part of the Highmark Theatre when opened up to be an inside/outside space
- Ideal for overflow space from Highmark Theatre

Terrace



- Terrace can accommodate up to 80 patrons
- Weather permitting, the Terrace can be an extension of the Café
- Perfect space for cocktail hour or open reception

Café



- Ideal as a VIP or closed reception area
- Can comfortably hold up to 80 patrons
- Equipped with audio playback

- Great space for private VIP meet and greet



Student Lounge



- Can comfortably hold up to 50 patrons
- Lounge can serve as a VIP or closed reception area
- Also serves as the Rauh Theatre lobby
- Equipped to have audio playback and media for three television monitors



Rehearsal Studio(s)



- total of four rehearsal studios
 - all varying sizes
- Equipped for audio playback and projection
- Features include mirrors, blackout curtains, marley floors, and computer built in to the room
- Great for break-out spaces, meeting rooms, and/or rehearsal spaces



Studio 1

Capacity: 90

Studio 2:

Capacity: 82

Studio 3:

Capacity: 54



Studio 4:

Capacity: 60

Shared Inventory

Please note: This is the inventory for the building. These items are shared between each space. Each of the items are subject to availability. Please contact Pittsburgh Playhouse staff for current available items.

Lighting

**Subject to availability*

Lighting Fixtures

- 6 – 3” Fresnel
- 20 – Par 16
- 6 – HUI 3 cell Cyc
- 6 – L&E 6’ Zip Strip
- 4 – Par 38 Strips
- 25 – Source4 LED Lustr 50 deg
- 25 – ETC Vivid LED Par
- 2 – Varilite 2500 Spot
- 6 – Clay Packy Alpha300 Spot
- 3 – Varilite 500 Wash
- 6 – Clay Packy Sharpy Wash
- 2 – Canto Followspot

Fixture Accessories

- 4 – “B” size gobo rotator
- 1 – “M” size gobo rotator
- 1 – I Pro slide projector
- 6 – 6” Barndoors for Fresnels (7 1/2” frame)
- 6 – 6” Barndoors for Source 4 Pars/Parnels (7 1/2” frame)
- 6 – 10” Top Hats
- 10 – 7.5” Top Hats
- 6 – 6.25” Half Hats

- 6 – 7.25” Half Hats
- 3 – Drop-in Iris kits for Source 4
- 2 – Followspot handle for Source 4

Miscellaneous

- 2 – 16” Mirror Ball
- 1 – Ultratec Stage fogger
- 1 – Radiance Hazer
- 2 – Litronics 4X600 dimmer
- 1 – Litronics 2X1200 dimmer
- 8 – 4 rung pipe ladders
- 2 – 3 rung pipe ladders
- 3 – 10’ triangle truss
- 2 – 10’ flat truss
- 8 – 10’ boom

Audio

**Subject to availability*

Wireless Microphones

- RACK A
 - 1 FURMAN PL-PROC Power Distro
 - 1 SHURE UA845UWB Antenna Distributor
 - 2 SHURE Whip Antenna
 - 3 SHURE ULXD – 4Q 4 channel Receiver
 - 12 SHURE ULXDI Bodypack Transmitter
- RACK B
 - 1 FURMAN PL-PROC Power Distro
 - 2 SHURE Whip Antenna
 - 2 SHURE ULXD – 4Q 4 channel Receiver
 - 8 SHURE ULXDI Bodypack Transmitter

- RACK C
 - 1 SHURE UA845UWB Antenna Distributor
 - 2 SHURE Whip Antenna
 - 2 SHURE ULXD – 4Q 4 channel Receiver
 - 8 SHURE ULXDI Bodypack Transmitter

- RACK D
 - 1 FURMAN PL-PROC Power Distro
 - 2 SHURE Whip Antenna
 - 2 SHURE ULXD – 4Q 4 channel Receiver
 - 8 SHURE ULXDI Bodypack Transmitter

- RACK E
 - 2 SHURE Whip Antenna
 - 2 SHURE ULXD – 4D 2 channel Receiver
 - 4 SHURE ULXH Bodypack Transmitter

*All theaters have 2 Shure UA874 Active Directional Antennas available

Wireless Handheld Microphones

- 4 Shure ULXD2 Handheld Microphones

Earset Microphones

- 5 Point Source CO-8W (4 Beige/ 1 Brown)
- 16 Point Source CO-5W (Beige)
- 10 Countryman E6 (Beige/Tan)
- 14 Microphone Madness PSM (Beige)
- 6 Microphone Madness PSM (Brown)

Lavaliere Microphones

- 11 Countryman B3 (Beige)

- 10 Countryman B3 (Black)
- 3 Microphone Madness PSM-L (Beige)
- 7 Microphone Madness PSM-L (Black)
- 5 Shure WL-93 (Beige)
- 5 Shure WL-93 (Black)

Dynamic Microphones

- 4 Shure SM 57
- 9 Shure BETA 57
- 1 Shure SM 58
- 9 Shure BETA 58-A
- 2 Shure SM 55 SH Classic
- 1 Shure PG 52

Condenser Microphones

- 5 Shure PG 81
- 2 Shure KSM 141
- 3 ATM 33a
- 3 ATM PRO 37
- 4 ATM 350 Mini with mount
- 4 ATM 835 B Shotgun
- 2 ATM U853R Hanging Choral Mic
- 2 AKG C519 Micro Mic Clip On

Drum Package (PG DMK)

- 1 PG 52 Cardioid Dynamic Kick Drum
- 3 PG 56 Snare / Tom
- 2 PG 81 Condenser

Boundary Mics

- 7 CROWN PCC 160 Phase Coherent Cardioid Mic
- 3 ATM 851

Switch Mics

- 1 ATM Pro 41 Dynamic with switch
- 1 Shure PG 48 Dynamic with switch
- 3 Shure PG 58 Dynamic with Switch

Direct Boxes

- 5 BEHRINGER ULTRA D/I Active Direct Box
- 2 Boss DI-1 Active Direct Box

Microphone Stands

- 20 Straight Microphone Stands
- 6 Tripod Microphone Stands
- 10 Short Microphone Stands
- 14 Boom Arms
- 4 OnStage Stands Speaker Stands

DANTE

- 2 YAMAHA Rio 3224
- 2 YAMAHA Rio 1608

MIXERS

- 4 SOUNDSCRAFT Expression 1 16 Channel Digital Mixer
 - (with 4 SOUNDSCRAFT 16i mini stagebox and MADI card)
- 1 MACKIE 1604 VLZ3 16 Channel Analog Mixer

AMPLIFIERS

- 3 QSC GX5 500W 2 channel Power Amplifier
- 1 QSC PL340 800W 2 channel Power Amplifier
- 1 CROWN XLS1000 200W 2 channel Power Amplifier
- 1 CREST V1500 1500W 2 channel Power Amplifier

SPEAKERS

- 16 QSC K10.2 Active Loudspeaker
- 4 QSC KSub Active Subwoofer
- 2 JBL AC 28/95 2X8 Speakers
- 5 JBL Marquis Series MS 28 Speakers
- 4 PEAVEY PV 12 M Wedge Monitors
- 4 TOA SL 122 M Wedge Monitors
- 3 TOA F-160G Speakers
- 2 Mackie MR 5 Self Powered Speaker
- 2 YAMAHA MSP 5 Self Powered Speakers
- 1 RokIt Self Powered Speaker

EFFECTS

- 1 LEXICON MPX 500 Effects Generator
- 1 LEXICON MX 300 Effects Generator

SNAKES

- 3 PROCO SMA1604FBX-50 50' 16X4 Snake
- 1 PROCO StageMaster 75' 16X4 Snake

CLEARCOM

- 1 CLEARCOM PS-702 2 Channel Intercom Power Supply
- 1 CLEARCOM TW-12C Single Channel Interface

**INVENTORY SUBJECT TO CHANGE*

WIRELESS MICROPHONE FREQUENCY CHART

#	Frequency	#	Frequency
	477.025		511.300
	478.700		512.150
	479.750		513.725
	480.600		515.200
	481.100		515.575
	482.100		516.925
	483.675		517.675
	486.075		520.000
	486.475		521.850
	486.950		522.925
	488.300		524.700
	489.500		525.525
	491.925		526.200
	492.050		527.000
	492.875		527.450
	501.775		528.625
	502.825		529.600
	503.175		530.425
	505.450		530.825
	507.300		531.425
	508.150		532.900
	509.425		554.950
	510.200		557.375

SUBJECT TO CHANGE

Video/Projection

**Subject to availability*

In addition to the theater-specific equipment, the following loose pool of equipment can be scheduled for use on productions and events:

Projectors and lenses:

- Two (2) Panasonic PT-DW750 DLP projectors, with the following optional lenses:
 - Two (2) TKGFO156-1 Standard Zoom lenses (1.82-2.55:1 throw)
 - One (1) ET-DLE085 short throw zoom (0.84-1.04:1 throw)
 - One (1) ET-DLE150 zoom (1.38-1.99:1 throw)

- Two (2) Barco RLM W14 projectors, with the following optional lenses:
 - Two (2) R9862000-TLD+ (0.73:1) short throw fixed lens
 - One (1) R9862010-TLD+ (1.5 - 2.0:1) zoom lens
 - One (1) R9862020-TLD+ (2.0 - 2.8:1) zoom lens

Projection screens:

- Four (4) Fast-Fold 104”x140” DualVision projection screens

AV signal distribution:

- Eight (8) AMX-FG1010-500 DXLink Receiver
- Three (3) AMX FG1010-310 DXTX DXLink Transmitter Units.
*These can be used in conjunction with the AMX Enova signal distribution system in a given theater, or can be used as TX-RX pairs as stand-alone, point-to-point HDMI signal extenders to route HD signal up to 100 meters (328 ft).

Stage Drapery

STAGE DRAPERY SCHEDULE

REFER TO DRAWINGS FOR INSTALLATION LOCATIONS FOR DRAPERY. QUANTITIES INDICATED IN 'BASE' COLUMN SHALL BE FURNISHED AND INSTALLED UNDER THE BASE BID CONTRACT. REFER TO SPECIFICATION 11 61 43 FOR ADDITIONAL DRAPERY INFORMATION.

ALL DRAPERY DIMENSIONS SHALL BE FIELD VERIFIED AGAINST INSTALLED BATTEN AND TRACK ELEVATIONS PRIOR TO COMMENCEMENT OF SEWING.

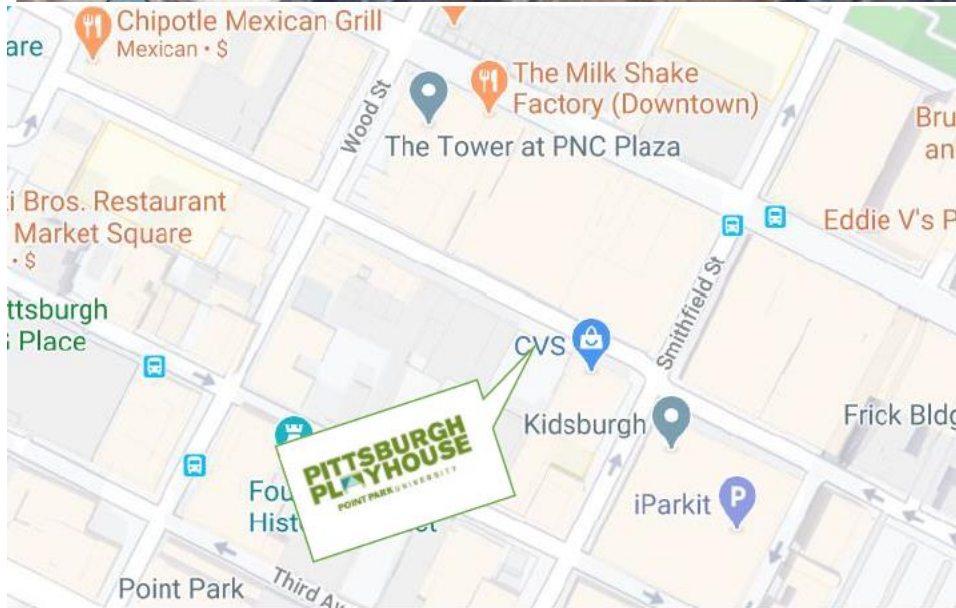
LOCATION	QTY. TO FURNISH	DRAPERY TYPE / NAME	COLOR	ADDED FULLNESS	FINISHED DIMENSIONS (PER PANEL)				OTHER NOTES	
					WIDTH	HEIGHT	SIDE HEM RETURN ONSTAGE	OFFSTAGE		
AUDITORIUM ORCHESTRAL PIT	6	ACOUSTIC DRAPERY PANEL	ARCH (1)	50%	7'-0"	10'-6"	4"	4"	BOTTOM TO BE +12" A.F.F.	2
AUDITORIUM STAGE	1	MAIN TEASER	ARCH (1)	50%	48'-0"	10'-0"	4"	4"	6" CHAIN	4
AUDITORIUM STAGE	2	MAIN CURTAIN PANEL	ARCH (1)	50%	32'-6"	22'-0"	24"	4"	6" CHAIN	4
AUDITORIUM STAGE	6	VELOUR LEG	BLACK	NONE	16'-0"	23'-0"	4"	4"	6" CHAIN	4
AUDITORIUM STAGE	6	VELOUR BORDER	BLACK	NONE	56'-0"	10'-0"	4"	4"	6" CHAIN	4
AUDITORIUM STAGE	8	VELOUR TAB	BLACK	NONE	8'-0"	23'-0"	4"	4"	6" CHAIN	4
AUDITORIUM STAGE	4	MID STAGE TRAVELER PANEL	BLACK	50%	31'-0"	22'-0"	24"	4"	6" CHAIN	4
AUDITORIUM STAGE	1	VELOUR BLACKOUT PANEL	BLACK	NONE	56'-0"	23'-0"	4"	4"	6" CHAIN	4
AUDITORIUM STAGE	2	VELOUR BLACKOUT PANEL - 1/2	BLACK	NONE	29'-0"	23'-0"	4"	4"	PIPE POCKET WITH SKIRT	4
AUDITORIUM STAGE	1	SHARKSTOOTH SCRIM	BLACK	NONE	56'-0"	22'-0"	4"	4"	PIPE POCKET WITH SKIRT	4
AUDITORIUM STAGE	1	SHARKSTOOTH SCRIM	WHITE	NONE	56'-0"	22'-0"	4"	4"	PIPE POCKET WITH SKIRT	4
AUDITORIUM STAGE	1	MUSLIN CYC	CBS GRAY	NONE	56'-0"	23'-0"	4"	4"	PIPE POCKET WITH SKIRT	4
ADAPTABLE THEATRE	13	VELOUR DOUBLE SIDED LEG	BLACK	NONE	10'-0"	19'-0"	4"	4"	6" CHAIN	4
ADAPTABLE THEATRE	3	VELOUR BORDER	BLACK	NONE	52'-5"	5'-0"	4"	4"	VELCRO HEIGHT ADJUST	4
ADAPTABLE THEATRE	2	VELOUR TRAVELER PANEL	BLACK	NONE	31'-4"	19'-0"	24"	4"	6" CHAIN	4
ADAPTABLE THEATRE	1	SHARKSTOOTH SCRIM	BLACK	NONE	52'-5"	19'-0"	4"	4"	PIPE POCKET WITH SKIRT	4
ADAPTABLE THEATRE	1	MUSLIN CYC	CBS GRAY	NONE	63'-0"	19'-0"	4"	4"	PIPE POCKET WITH SKIRT	4
BLACK BOX	12	VELOUR DOUBLE SIDED LEG	BLACK	NONE	10'-0"	11'-6"	4"	4"	6" CHAIN	4
BLACK BOX	2	VELOUR BORDER	BLACK	NONE	30'-5"	3'-0"	4"	4"	VELCRO HEIGHT ADJUST	4
BLACK BOX	1	SHARKSTOOTH SCRIM	BLACK	NONE	30'-5"	11'-6"	4"	4"	PIPE POCKET WITH SKIRT	4
BLACK BOX	1	MUSLIN CYC	CBS GRAY	NONE	36'-6"	11'-6"	4"	4"	PIPE POCKET WITH SKIRT	4
SOUND STAGE	12	VELOUR DOUBLE SIDED LEG	BLACK	NONE	10'-0"	13'-6"	4"	4"	6" CHAIN	4
SOUND STAGE	2	MUSLIN CYC	CBS GRAY	NONE	38'-6"	13'-6"	4"	4"	PIPE POCKET WITH SKIRT	4
SOUND STAGE	3	CHROMA GREEN BACKGROUND	C.G.	NONE	31'-10"	13'-6"	N/A	N/A		4
SOUND STAGE	1	CHROMA GREEN GROUND CLOTH	C.G.	NONE	30'-0"	20'-0"	N/A	N/A	DUCK OR FOAM BACKED	4
REHEARSAL SPACE 01	1	MIRROR MASKING DRAPERY PANEL	ARCH(1)	50%	34'-0"	10'-6"	4"	4"	6" CHAIN	4
REHEARSAL SPACE 01	1	WINDOW MASKING DRAPERY PANEL	ARCH(1)	50%	10'-6"	10'-6"	4"	4"	6" CHAIN	4
REHEARSAL SPACE 02	1	MIRROR MASKING DRAPERY PANEL	ARCH(1)	50%	31'-0"	10'-6"	4"	4"	6" CHAIN	4
REHEARSAL SPACE 03	1	MIRROR MASKING DRAPERY PANEL	ARCH(1)	50%	40'-6"	10'-6"	4"	4"	6" CHAIN	4

KEYNOTES:

- 1 REFER TO ROOM FINISH SCHEDULE KEY ON ARCHITECTURAL DRAWINGS
- 2 CLIP TO TRAVELER TRACK CARRIERS USING SNAP CLIPS (TO BE FURNISHED BY DRAPERY MANUFACTURER).
- 3 TIE DIRECTLY TO PIPE BATTEN OR RAILING WHERE SHOWN USING TIE LINE (TO BE FURNISHED BY DRAPERY MANUFACTURER).
- 4 FURNISH DRAPERY TO OWNER FOR INSTALLATION BY OWNER PERSONNEL.

Directions and Parking

350 Forbes Avenue Pittsburgh, PA 15226



Directions and Parking

Directions to Playhouse:

From the East:

Take I-376 W/US-22 W to Exit 71A Grant Street. Continue straight on Grant Street and make a left onto Forbes Avenue.

From the West (Airport):

Take I-376 E to Exit 71A Grant Street. Continue straight on Grant Street and make a left onto Forbes Avenue.

From the North:

Take US-19 Truck/McKnight Road. Merge onto I-279 S and take the 7th Avenue/6th Avenue Exit from I-579 S/Veterans Bridge. Keep left and follow signs for PPG Paints Arena 6th Avenue and merge onto Bigelow Blvd. Turn right onto Sixth Avenue, followed by a left onto Grant Street and then right onto Forbes Avenue.

From the South:

Take PA-51 N. Use right lane to take US-19 S Truck ramp to Downtown/S Side/Dormont/I-579. Use right two lanes to turn right into Liberty Tunnel. Continue through Liberty Tunnel and turn slight right onto Crosstown Blvd. Turn left onto Forbes Avenue.

Parking:

On-street metered parking is available along Forbes Avenue and adjacent streets at Pittsburgh Parking Authority hourly rates.

The nearest public parking garage is located at the Hilton Garden Inn, 250 Forbes Avenue.

Other garages and surface parking lots are located downtown at various rates. Please note that some may be cash only.